

University of Pittsburgh
Division of General Internal Medicine

State of the Division

November 15, 2023 | 5:00 PM



Land Acknowledgement



- Adena culture
 - A Pre-Columbian Native American culture that existed in the Early Woodland period, from 500 BCE to 100 CE
- Hopewell culture
 - A network of precontact Native American cultures that flourished in settlements along rivers in the Middle Woodland period, from 100 BCE to 500 CE
- Monongahela people
 - An Iroquoian Native American cultural manifestation of Late Woodland peoples from AD 1050 to 1635

People



Education



VA



Faculty Life



Clinical



Research



Awards

Presentation Overview

Administrative Staff

New Faculty



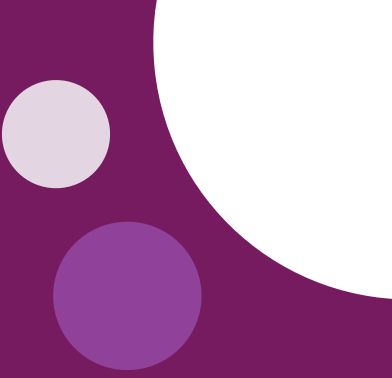
New Leadership Roles

Division Growth

People

DGIM Organization Chart

<https://www.gim-crhc.pitt.edu/dgim-organization-chart>



People:

Core Administrative Staff

Emily Buland

Executive Administrator

Barb Klipa

Division Administrator of Research

Kathy Nosko

Senior Administrative Manager

Tripti Joshi

Senior Accountant

Catie Cuban

Executive Administrative Coordinator

Kristee Adams

CRHC Operations Manager

Mary Margaret Populo

Director of Operations, GIM Med Ed Office

Marissa Consolmagno

Administrative Manager, Palliative Care

Megan Miller

Administrative Director, ICRE

Adam Kramer

Director of Operations, Hospital Medicine

Rachel Gerhardt

Director of Operations, Outpatient Care

Ethan Lennox

Medical Editor

Chelsea Dempsey

Content Specialist

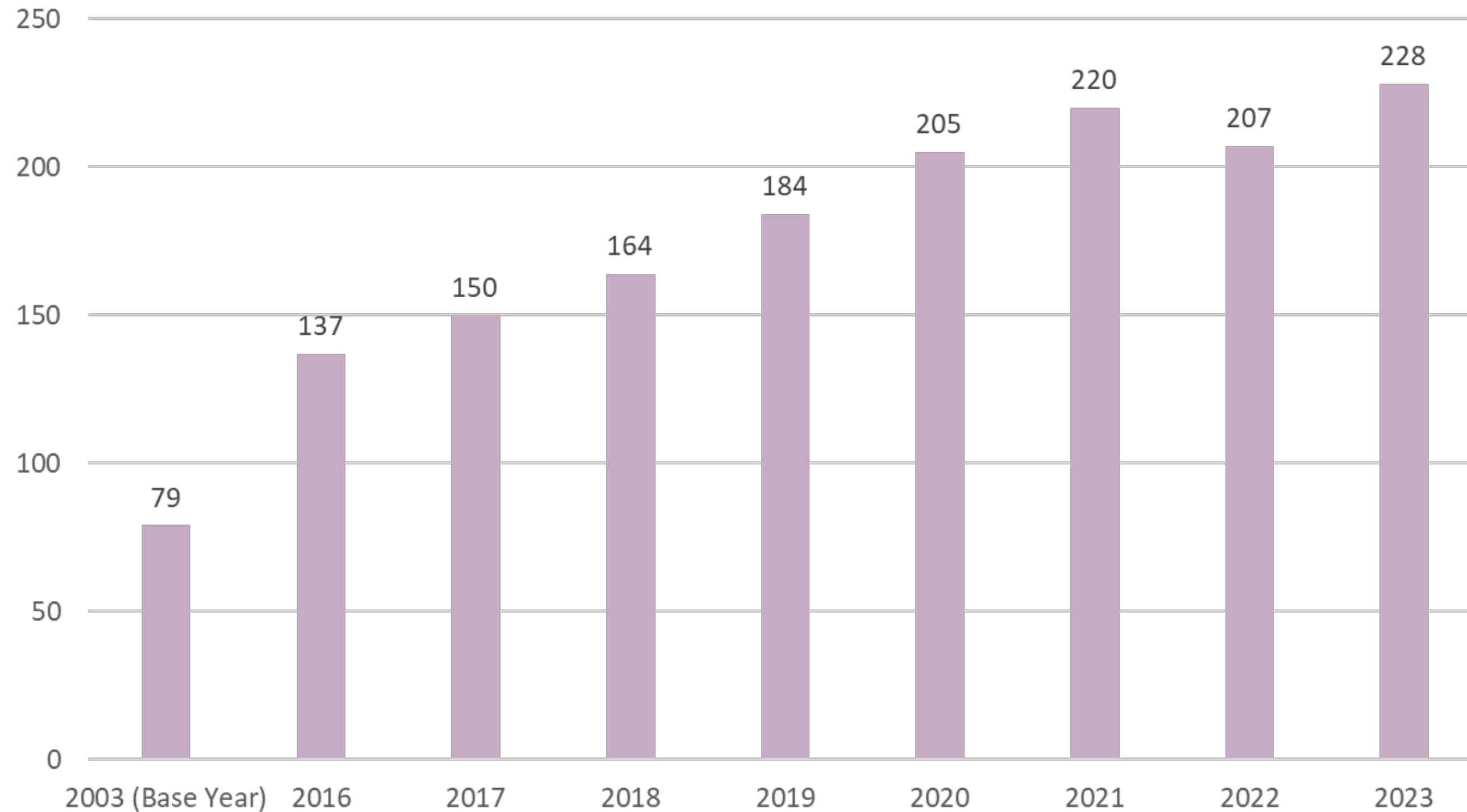
People:

GIM Leadership Team



- Kaleab Abebe
- Tasha Alston
- Emily Buland
- Andrea Carter
- Chung-Chou
(Joyce) H. Chang
- Alli DeKosky
- Mike Fine
- Gary Fischer
- Ray Ramirez
- Doris Rubio
- Carla Spagnoletti
- Galen Switzer

Division Faculty Growth



Note: Includes University of Pittsburgh full-time faculty and volunteer faculty who have a UPP appointment and excludes research associates, adjunct faculty, and emeritus faculty.

People:

New Leadership Roles

Andrea Carter

Program Director, IM Residency

Joyce Chang

Director of PhD Faculty Affairs

Allie Dakroub

Medical Director, Combined Med-Peds Practice at Turtle Creek

Anna Donovan

Program Director, ACES Fellowship

Walid Gellad

Associate Chief of Staff for Research & Development, VAPHS

Diana Samberg

Associate Program Director for Operations, IM Residency

Jane Schell

Chief, Section of Palliative Care & Medical Ethics

Yael Schenker

Associate Chief of Research, Section of Palliative Care & Medical Ethics

Carla Spagnoletti

Associate Dean for Faculty Affairs

Galen Switzer

Associate Chief of Research, DGIM

People:

New Hires - Primary Care APPs



Hannah Burkholder
Kala Klug

Michelle Markle
Bridgette Serrecchia



People:

New Hires - Palliative Care



Physicians & APPs



Gina Piscitello
Charles Mupamombe

Sara Hayes
Julia Nebel
Stacy Niditch



People:

New Hires - Hospitalists



UPMC Mercy
Mohammad Hasan
Aleesha Kainat

UPMC Shadyside
Dominic Pezzone
Varun Ravindran



People:

New Hires - Hospitalists

UPMC Presbyterian/Magee



Himal Chapagain



Allison Cipriani



Ashten Ebersbacher



Adam Hsu



Audrey Lim



Almut McDermott



Jessica Oh



Michael Porter



Raisa Silva



Wilton Smith



Mikisa Solomon



Justin Wang
(ACES Fellow)

People:

New Hires - Research



Yi-Fan Chen



Jason Colditz



Wei-Hsuan 'Jenny'
Lo Ciganic



Tianxiu Wang



Erin Winstanley



Tim Anderson



Karlyn Edwards



Lakeya McGill



Bryant Shuey

People:

Faculty Departures



- Shalini Chiravuri
- Esa Davis
- Utibe Essien
- Jonathan Jindia
- Kareem Lezama
- Jamil Masood
- Nicholas Maston
- Dave McAdams
- Ashish Patel
- Robin Roy



Honoring Kevin Kraemer

As founder of the Section of Treatment, Research, and Education in Addiction Medicine (STREAM) and 25+ years in DGIM, he has made an impact on many that will not be forgotten. Happy retirement, Dr. Kraemer!



Outpatient Clinics



Palliative Care



Hospitalists



Strategic Goals

Clinical Care



Clinical Care:

Outpatient Clinic Locations

- IMREP
- Montefiore
- Turtle Creek
- South Hills
- SHEA Medical Center
(UPMC Shadyside)
- 2nd Avenue

Clinical Care:

Outpatient Clinical Leadership

Gary Fischer

Diana Samberg

Greg Bump

Dave Demoise

Brent Thiel

Anita Leon-Jhong

Alex Mieczkowski

Rachel Gerhardt

Mandi Robosky

Jamie Seliga

Beth Botti

Ariana Freund

Associate Chief, Ambulatory Medicine

GIMO Ambulatory Resident Education

Assistant Medical Director, GIMO

Medical Director, South Hills

Medical Director, Shadyside

Medical Director, IMREP

Medical Director, 2nd Ave Commons (2AC)

Medical Director, Turtle Creek

Director of Operations

Senior Practice Manager, GIMO

Nurse Manager, South Hills

Nurse Manager, Shadyside

Practice Coordinator, IMREP & 2AC

DGIM Outpatient Volume

Location	FY20	FY21	FY22	FY23	% Change
GIMO	42,271	35,387	34,692	35,935	3.6%
IMREP	-	5,068	5,175	4,525	-12.6%
Shea Medical Center	8,277	8,245	8,736	9,031	3.4%
Turtle Creek	1,275	1,663	2,280	1,868	-18%
South Hills	4,630	5,161	6,981	8,222	17.8%
2nd Ave Commons	-	-	-	1,225	NA
TOTAL VOLUME	56,903	56,572	57,864	60,806	5%

GIMO Pres Ganey Scores

	Oakland	South Hills	Shea
Access	79%	91%	79.3%
Care Provider	90.8%	95.4%	89.4%
Moving Through Visit	78%	85.9%	76.7%
Overall Assessment	87.9%	94.4%	83.5%

2023 Star Ratings

Measure	Score	Tier Achieved	Tier 1 Target
Star Rating - Medicare	4.2	Tier 1	4.2
HEDIS Gap Closure Rate - Medicaid	77.1%	Tier 3	70.8%
HEDIS Gap Closure Rate - Commercial	77%	Tier 3	70.8%
HEDIS Gap Closure Rate - Commercial Risk Adjusted	66.7%	Tier 2	62.5%

Clinical Care:

UPMC Turtle Creek Med/Peds Clinic

Clinical Primary Care

- Med-Peds Residents: 16
- Faculty: 4 GIMO-based, 1 GAP-based

~85% Patients Insured by Medicaid or Medicare

- Initiatives to address SDOH

Various Providers

- Pediatric PALS (Pediatric Advocacy Leadership Service) track residents
- NEW! Internal Medicine ambulatory intern clinical site



Clinical Care:

Fibromyalgia Clinic

- Rheumatology referral-based clinic with the goal of improving access to rheumatology, quality of life, & symptom control
- Women's health learners in clinic on a regular basis
- QI project demonstrated significant improvement in symptom control from initial visit to last visit



Rachel Vanderberg



Jillian Kyle



Trisha Miller



Carly Gabriel

Clinical Care:

Gender Affirming Care

- ~215 active patients on hormones/utilizing other forms of gender affirmation services
- Collaborating with UPMC departments, UPMC Health Plan, & Wolff Center to develop multidisciplinary gender clinic



Eloho Ufomata



Sarah Tilstra



Rebecca Green



Austin Griffith



Amy Gavlik

Clinical Care:

Progress Evaluation & Referral Center (PERC)

>400 medically complex patients

- Childhood-onset conditions (Autism, spina bifida, cerebral palsy, etc.) +/-
- Intellectual or developmental disability +/-
- Technology-dependent medical care (tube feeds, wheelchair, ventilator, etc.)

3 Med-Peds Physicians

- Kristen Ann Ehrenberger, MD, PhD
- Alda Maria Gonzaga, MD, MS
- Reed Van Deusen, MD, MS



Heather Graves



Amy Gavlik

New PERC Staff:

- Heather Graves, CRNP
- Amy Gavlik, RN, Case Manager

Clinical Care:

Enhanced Care Program (ECP)

In 9th Year

188 ACTIVE patients, with 433 total enrollments since July 2014

UPMC HP's most vulnerable population

- Severe persistent mental illness
- Those struggling with chronic homelessness

24/7 access to the team, close collaboration across different care silos



Clinical Care:

Birmingham Free Clinic

Medical Directors:

Eliana Bonifacino & Jen Corbelli

Clinical Director:

Mary Herbert

Moved to Mercy Hospital campus July 2023

- 29th year in service
- \$650K in grants/donations past 5 years
- 1,288 unique patients
- 22 subspecialty clinics

Patient Characteristics

chronically un- & underinsured, mostly housed, low-income, 1/3 episodically or transitionally homeless, immigrants, asylees, refugees, temporary residents

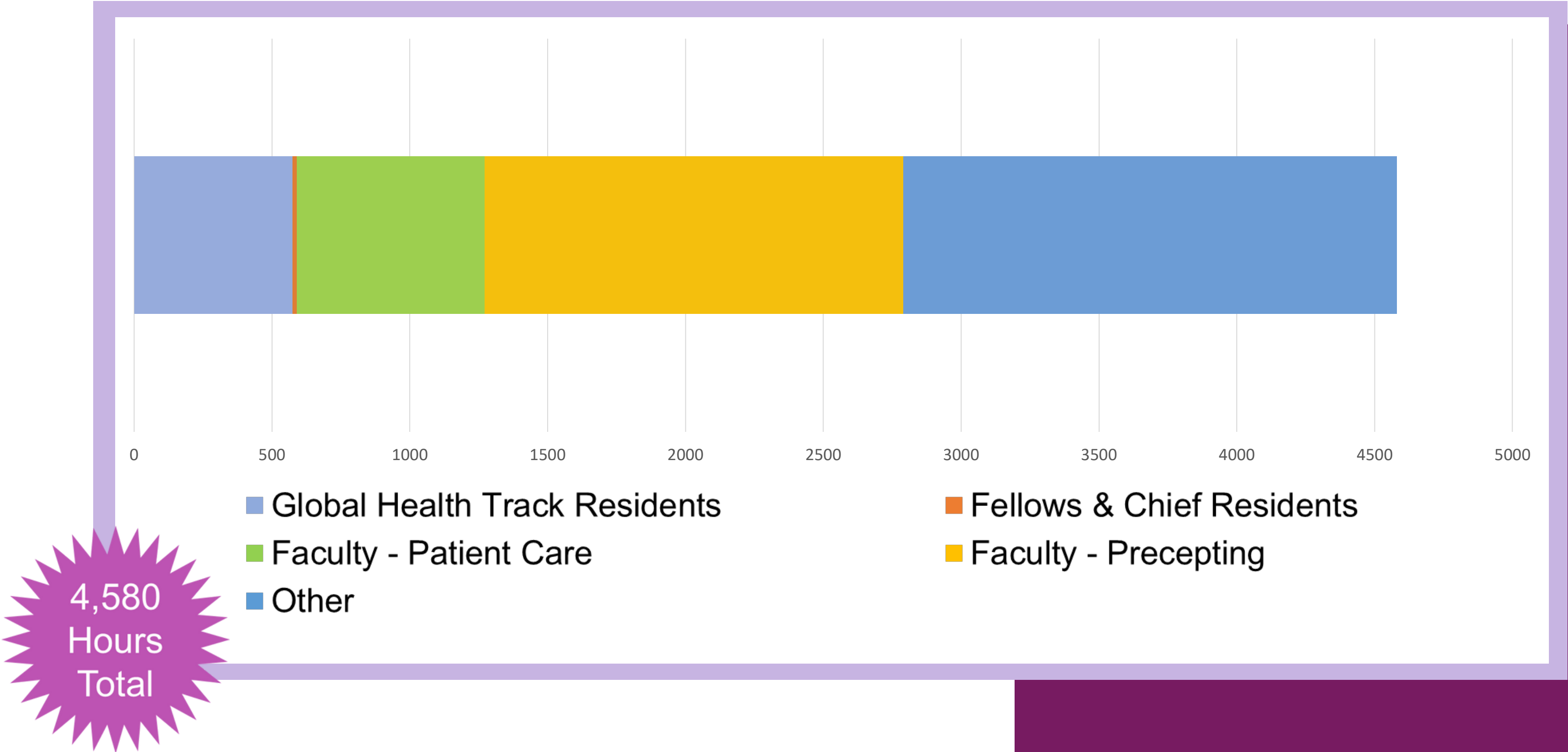
- 33% homeless*
- 27% Black/47% White/30% Latino/Hispanic/6% Asian
- 62% of patients are non-English speaking



*Federal McKinney Act criteria for homelessness: doubled up, street homeless, living in a residential facility, etc.

Clinical Care:

BFC - Volunteer Time Donated



Birmingham Free Clinic

How to Donate

- Pitt Giving/Medical & Health Sciences Foundation Website (generates formal tax receipt)
 - giveto.pitt.edu/Birmingham
 - Operational patient care expenses – medications, medical supplies, etc.

2. @Jennifer-Corbelli-1
 - a. basic needs and/or unique patient expenses – on site food pantry, basic imaging support



3. On site Period Hygiene Pantry – Amazon wish list



Clinical Care:

2nd Avenue Clinic

Opened November 2022

Services

- “Transitional Primary Care”
- Behavioral health
- SUD
- Gyne
- Wound care
- Basic foot care

Clinic Volumes: Nov - July

- 435 unique patients served
- 841 MD Visits
- 425 RN Visits
- 310 BH Therapist Visits



Clinical Care:

IM Recovery Engagement Program (IMREP)

Serves clients 17+ with OUD on medical assistance

Dual addiction & primary care for patients with other SUD

Addiction Medicine Fellowship training site

Initiatives

- Lower threshold to access treatment
- Harm reduction kits & naloxone distribution
- Substance use coercion
- E-consults
- palliative needs/addiction
- Clinical trials enrollment

Patient Volume	
Payor	Total
Medicaid	125
Medicare	65
Commercial	134
Self-pay/Other	17
TOTAL VOLUME	341



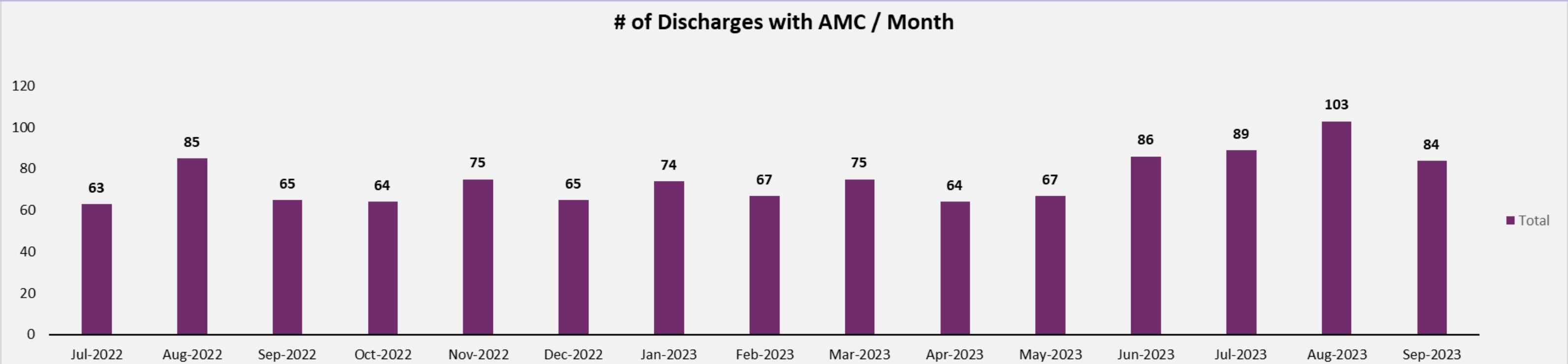
Clinical Care:

Addiction Medicine Consult Service

Initiated Opioid Withdrawal Protocol:

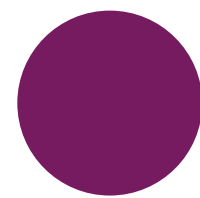
Using short-acting, full-agonist opioids

- Reduced rates of in-hospital substance use & overdose
- Increased patient comfort & engagement

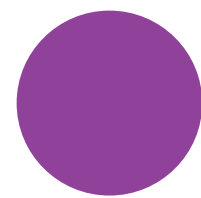


Clinical Care:

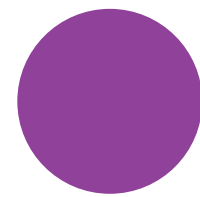
Who has the top
comprehensive preventive care
ranking among outpatient
providers with <1000 measures?



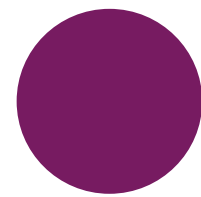
Dave Demoise



Gary Fischer



Eric Anish

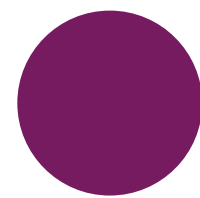


Jodie Bryk

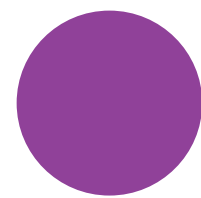


Clinical Care:

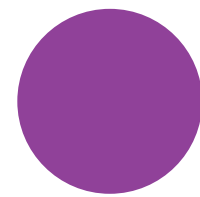
Who has the top
comprehensive preventive care
ranking among outpatient
providers with <1000 measures?



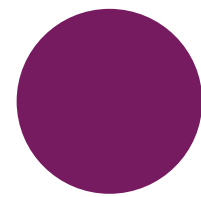
Dave Demoise



Gary Fischer



Eric Anish



Jodie Bryk





Clinical Care:

Hospital Medicine

- UPMC Presbyterian
- UPMC Magee
- UPMC Mercy
- UPMC Shadyside
 - Bone Marrow Transplant Unit
 - Pittsburgh Cancer Institute

Clinical Care:

Hospital Medicine Leadership



Alli DeKosky



Ray Ramirez



Mash Khan



Alan Domat



Colby Chamberlain

Clinical Care:

PUH/MAG Hospital Medicine Leadership

Alli De Kosky

- Medical Director, Hospital Medicine
- Director, Inpatient Quality Initiatives & Education
- Director, Hospital Medicine Faculty Development

Ra y Ra m i r e z

- Associate Medical Director, Hospital Medicine
- Site Director, Magee Hospital Medicine
- Lead Physician for Physician Recruitment & Onboarding

Molly Brennan

- Leader, Nocturnist Services

Kristian Feterik

- eRecord Medical Director for Interoperability
- Associate Medical Director, Clinical Documentation Improvement

Lauren Glikes

- Hospital Medicine Director on Call

Bill Levin

- Medical Director, Inpatient Consults & Co-Management

Clinical Care:

PUH/MAG Hospital Medicine Leadership

Casey McQuade

- Hospital Medicine Director on Call

Ann Perrin

- Director of Academic Development

Raghu Purushothaman

- Hospital Medicine Procedural Director

Evan Sacolick

- Lead Physician for Annual Schedule

Ben Sprague

- Director of QI & Patient Safety

Danica Smith

- Director, APP Education & Advancement
- Co-Director of Academic Development

John Szymusiak

- APD, Internal Medicine Pediatrics Residency

Physician Unit Partners

- Andy Cheng
- Lauren Glikes
- William Levin
- Ann Perrin

Clinical Care:

MER Hospital Medicine Leadership

Fnu Abhishek

- Medical Director, Mercy e Record

Brenna Conroy

- Associate Program Director, MER Residency Program

Katherine Foust

- Program Director, MER Residency Program

Mash Khan

- Medical Director, Mercy Hospital Medicine

Bhagat Kondaveeti

- Associate Program Director, MER Residency Program

Amaninder Toor

- Clinical Director of APPs, UPMC Mercy Hospitalist

Owen Schwartz

- Analytics Officer, Hospitalist Medicine

Clinical Care:

SHY Hospital Medicine Leadership

Brielle Spataro

- Section Chief, GIM at SHY

Amanda Lenhard

- VP, Hospital Medicine
- VP, Clinical Care Coordination
- Chief of Medicine, UPMC SHY

Colby Chamberlain

- Co-Chief, Hospital Medicine
- Co-Associate Director, Clinical Documentation Improvement
- Physician Unit Partner

Alan Domat

- Co-Chief, Hospital Medicine
- Co-Associate Director, Clinical Documentation Improvement

Clinical Care:

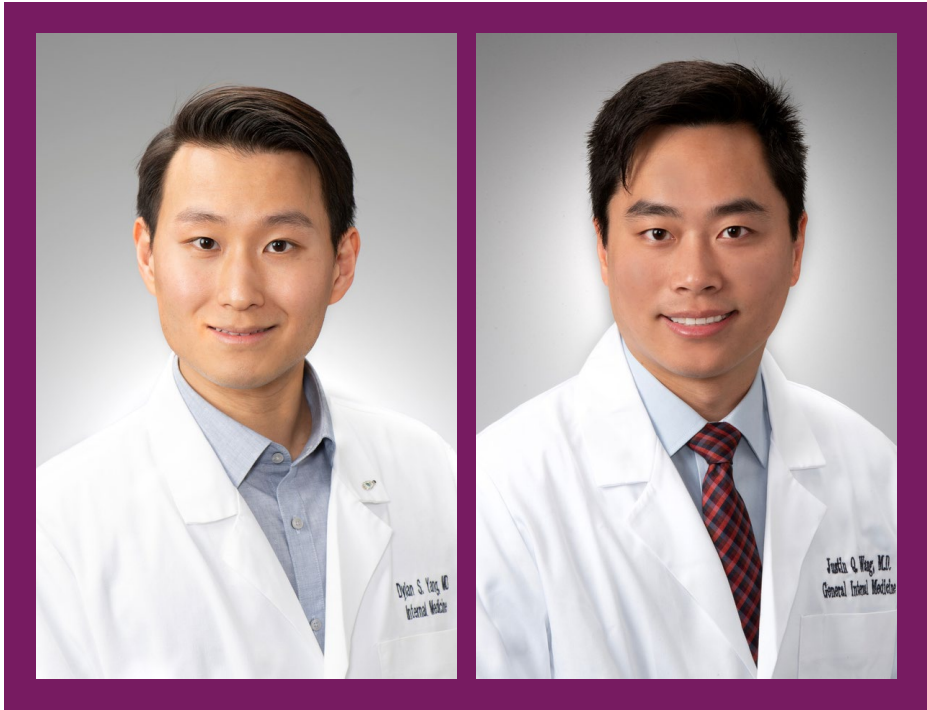
Presbyterian/Magee Hospitalists



Clinical Care:

Presbyterian/Magee

Hospital
Fellows



Advanced Practice Providers



Clinical Care:

Shadyside Hospitalists



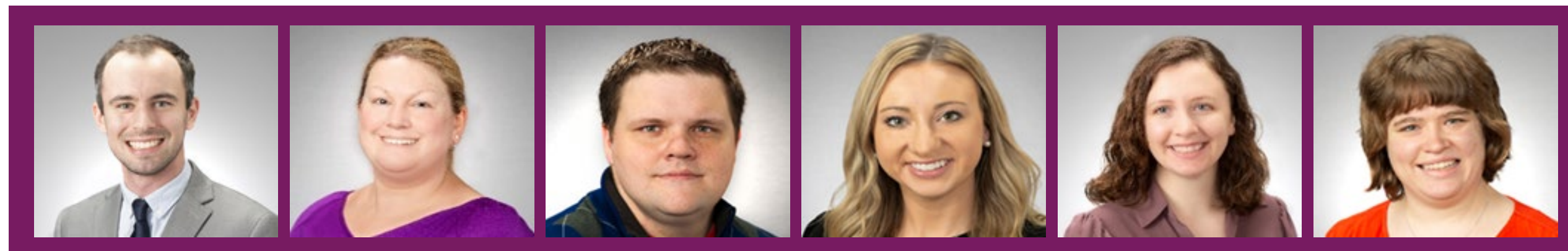
Advanced Practice Providers

Clinical Care:

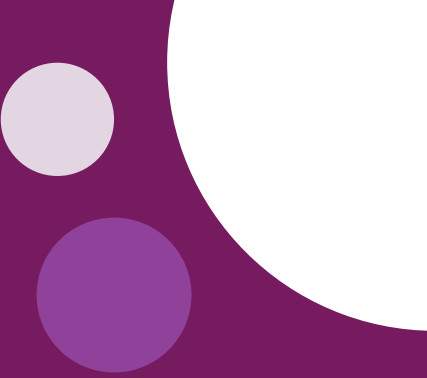
Mercy Hospitalists



Advanced Practice Providers



Hospital Volume



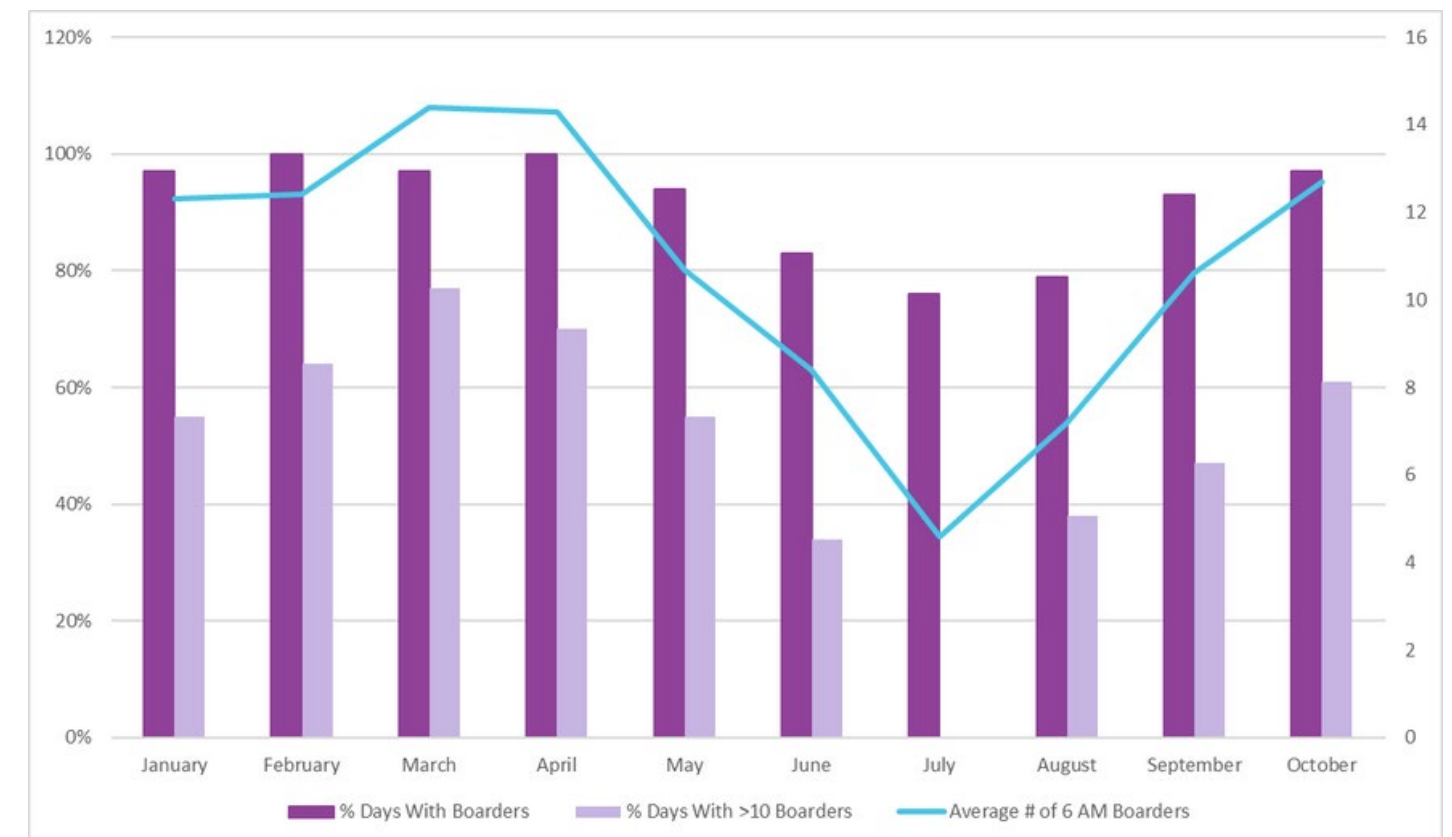
	AY22		AY23		% Change	% Change
	Admissions & Discharges	Discharges	Admissions & Discharges	Discharges	Admissions & Discharges	Discharges
PUH	2,648	4,792	2,413	4,448	-9%	-7%
MAG	2,137	2,584	2,501	2,907	17%	13%
SHY	2,933	4,462	3,205	4,655	9%	4%
MER	3,544	6,168	3,390	5,644	-4%	-8%
TOTAL VOLUME	11,262	18,006	11,509	17,654	2%	-2%

Clinical Care:

Boarder Management in Presby ED

- Medicine ED Boarder Team composition of hospitalists & Medicine Residents
- Partner with AOD & ED CM for active triage 24/7 to ensure efficient bedding of patients
- Start with Medicine Patients boarding in the Presby ED a minimum of 75 % but usually >95 % of days

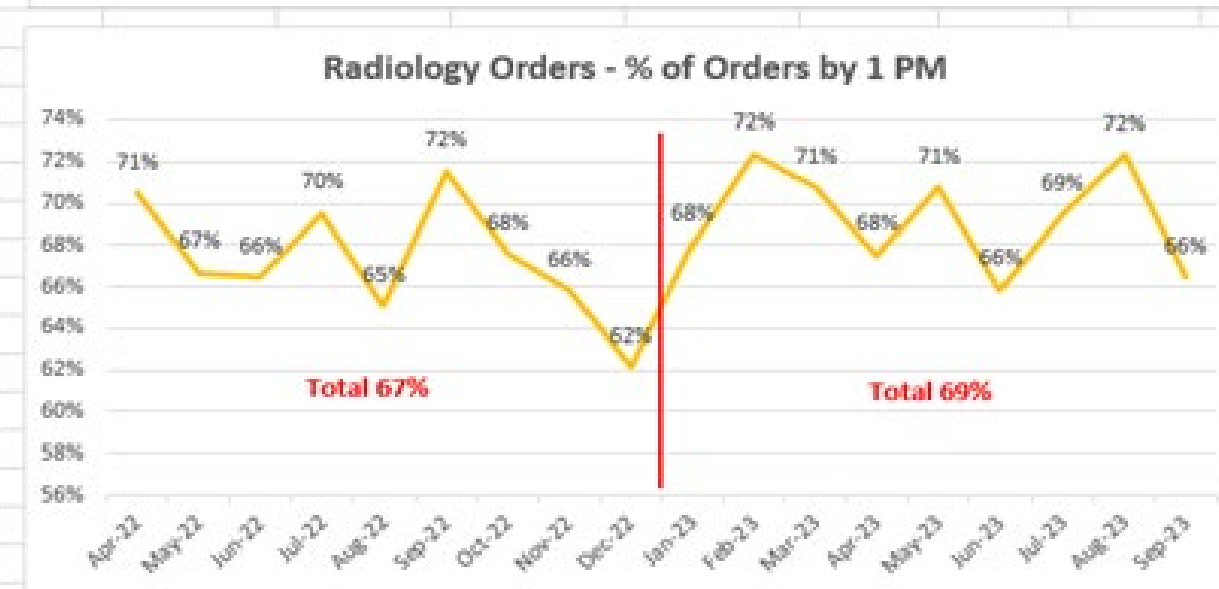
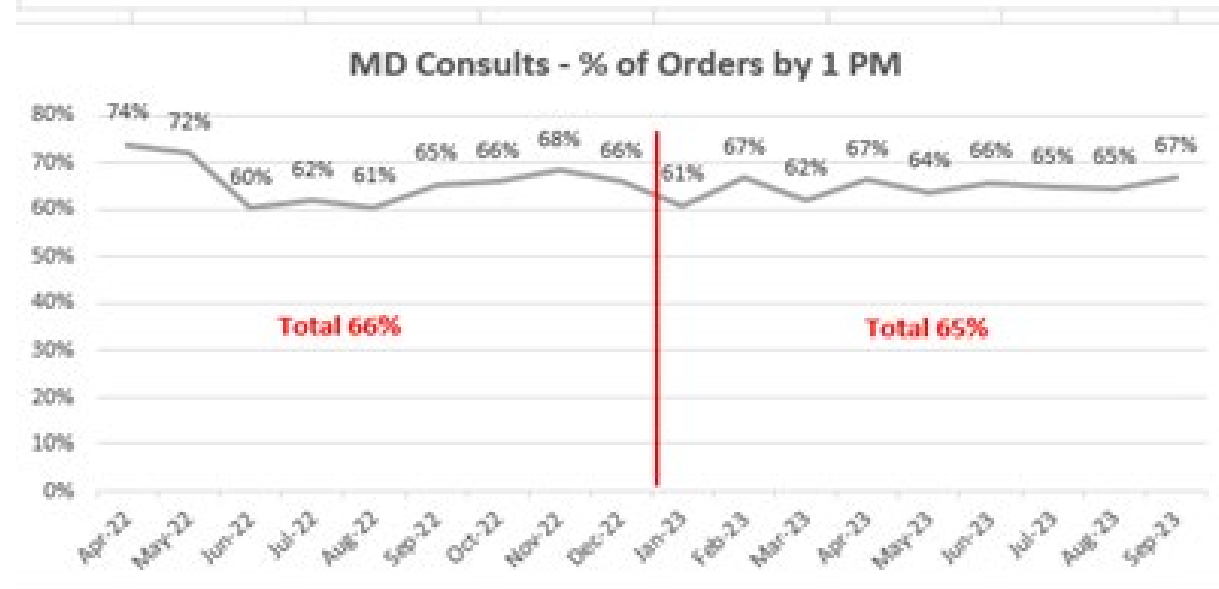
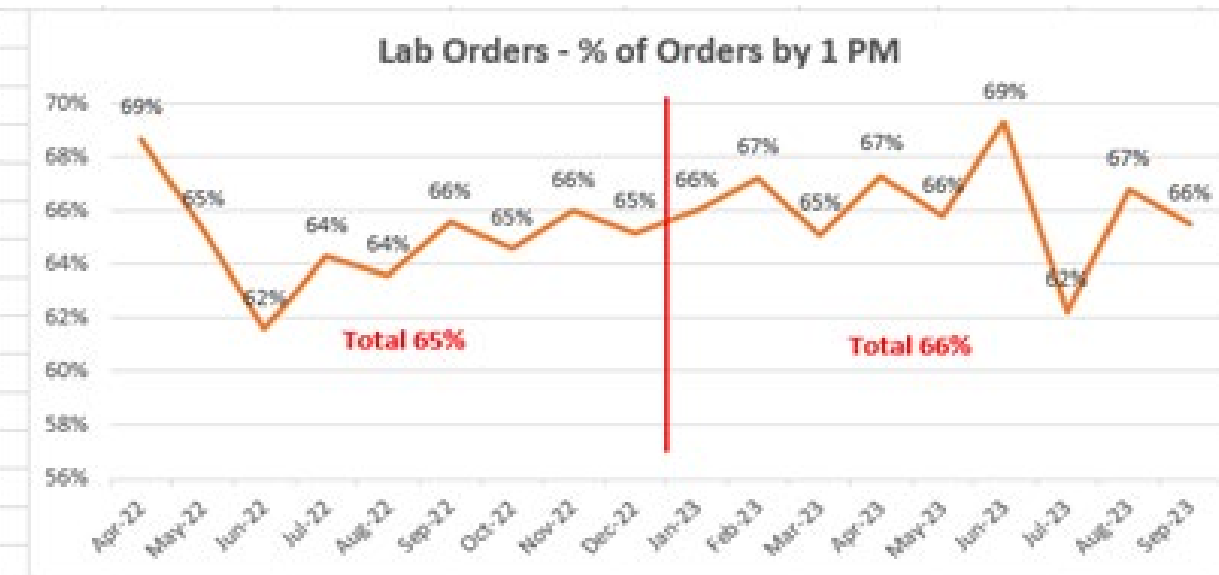
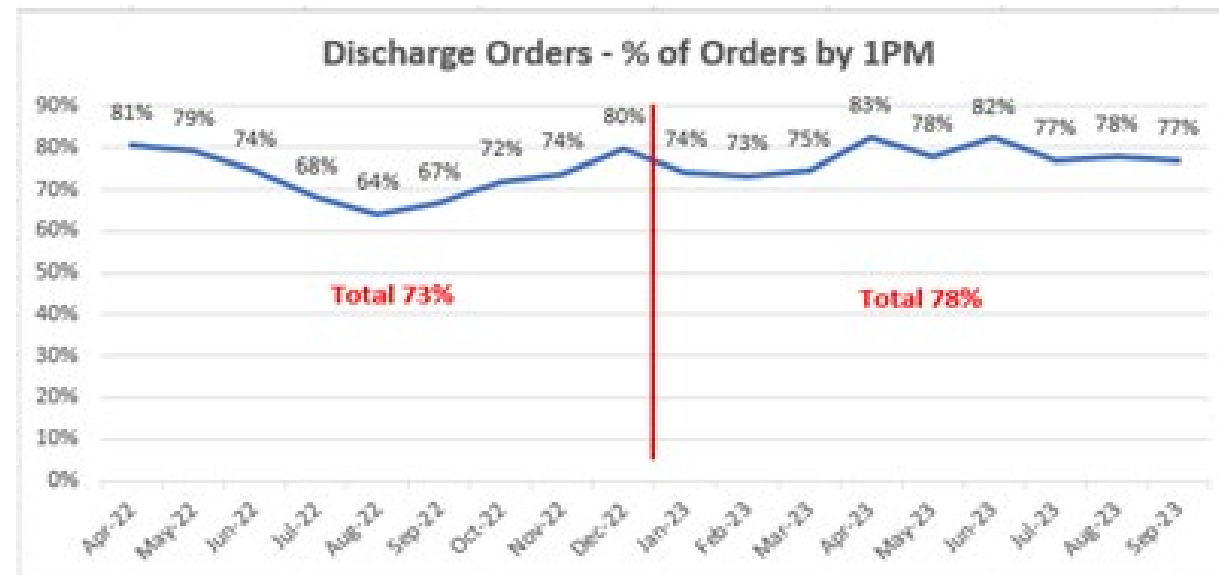
Average 65.5 boarders discharged from ED per month, with an average LOS ~1.5 days



Mercy Consult Communication Enhancement Initiative

- Worked with a multidisciplinary group of consultants
- Enhanced MedTrak algorithm to be more efficient & easier to ID which hospitalist team member to contact based on the situation

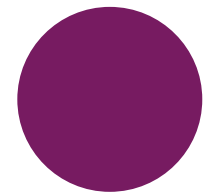
SHY Tablets & Rounding Efficiency



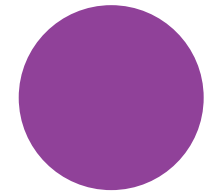
- Utilizing tablets to enhance rounding efficiency as most patients are non-geographic
- Tablets are a successful intervention in more timely care processes, mainly discharge orders, but also others

Clinical Care:

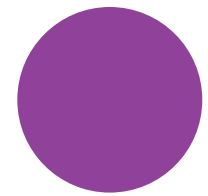
Who had the highest
percentage of Care
Coordination Power Plan usage?



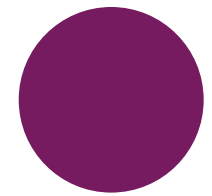
Nick Ma ston



Brenna Conroy



Ra o Afza l

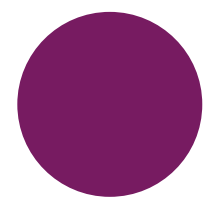


Ma rvi Bukha ri

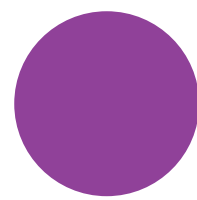


Clinical Care:

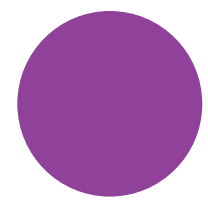
Who had the highest
percentage of Care
Coordination Power Plan usage?



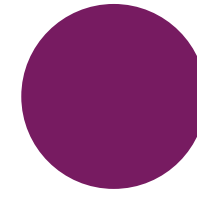
Nick Maston
N=68, 73%



Brenna Conroy
N=53, 78%



Rao Afzal
N=48, 91%



Marvi Bukhari
N=34, 76%



Clinical Care:

Section of Palliative Care Leadership



Jane Schell
Section Chief



Linda King
Associate Chief
Medical Director, SHY



Marika Harris
Administrator



Marissa Consolmagno
Administrator



Yael Schenker
Director, Pa RC



Ethan Silverman
Fellowship Director



Eva Reitschuler-Cross
Fellowship Associate Director
Medical Director, Magee



Sinthana Ramsey
Subspecialty Education
Coordinator



Alicia Topoll
Medical Director, PUH



Andrew Thurston
Medical Director, Mercy



Honoring Bob Arnold

As Section Chief for over 20 years, his impact on the growth of palliative care at UPMC and Pitt, and on all of us, is beyond measure.



Clinical Care:

New Clinicians & Admin - Palliative Care



Maria Garcia



Anna McGovern



Brian Molcan



Wendy Myers



Talia Padawer



Rhiannon Rieger



Maria Belin



Sarah Slater

Palliative Care Volume

Inpatient – PUH, SHY, Mercy, Magee

Outpatient – Hillman, CLC, CHF, Mercy, Magee, Benedum

Palliative Care Inpatient & Outpatient Volume					
	FY20	FY21	FY22	FY23	% Change
Inpatient	20,709	22,954	24,460	24,684	0%
Outpatient	4,274	5,490	5,053	4,307	-17%
TOTAL VOLUME	24,983	28,444	29,513	28,675	-3%

Clinical Care:

Partnering in Serious Illness Care

Goals of Care Initiative Now Live at 4 Sites

- Presbyterian, Shadyside, Magee-Womens, & Mercy

Advanced Illness Care (AIC) Program

- Identification of these patients seen by inpatient palliative care who benefit from home palliative care services

Hospice Transition

- Collaborating with GOC Obs pending status for seamless transition of patients near end of life to inpatient hospice

Clinical Care:

Partnering in Patient Experience

Open Letters, Shooting Stars: A Legacy at SHY

- Led by Czarina Kulick, LCSW
- Refunded for \$15K from The Shadyside Hospital Foundation

Miracle Box at Presby

- Led by Colleen Hutzel, LSW
- Received \$10K funding from Ladies Hospital Aid Society

Music Therapy Miracle Box at Magee

- Led by Rhiannon Rieger, MT-BC
- Funded by the Palliative & Supportive Institute



Clinical Care:

Partnering in Community

Lay Minister Program

Led by Justin Yu, MD, MS

This program offers hospice-centered training to Black lay ministers supporting community members in serious illness care. Collaboration with faith leaders in Pittsburgh's Black churches has fueled its expansion.



Clinical Care:

2023

Clinical Strategic Goals

Outpatient

- A** Achieve Tier 1 quality goals for Shared Savings
- B** Achieve bonus for 7-day ED follow-up
- C** Average mean time to new patient appointment – 7 days
- A** No-show rates to <20%
- A** Maintain Pres Ganey highest level

Clinical Care:

2023 Clinical Strategic Goals

Inpatient

B

Increase HCAHPS Physician Communication Domain to >78% Top Box Score

B

Average discharge order before 12 PM

B

Increase DGIM documentation of goals of care by 20% for intermediate risk SIRS patients

Clinical Care:

2023

Clinical

Strategic

Goals

Palliative Care

B

Expand outpatient palliative care for serious illness patients using telemedicine by 10%

B

Obtain philanthropic funding to increase PaRC & Section's ability to support junior faculty investigators & trainees historically underrepresented in palliative care

Clinical Care:

2023

Clinical

Strategic

Goals

Addiction Medicine



Create Bridge Service



Expand Addiction Medicine Consult Service to SHY



Stabilize staffing at IMREP



Hire APP for IMREP



Expand peer navigation from consult to service to post-discharge follow up

Clinical Care:

2024 Clinical Strategic Goals

Outpatient

- 1 Achieve Tier 1 quality goals for Shared Savings
- 2 Achieve SS bonus for 7-day ED & hospital follow-up
- 3 Increase outpatient volume by 10%
- 4 Maintain Pres Ganey highest level
- 5 Same day access for firm-specific APP
- 6 Plan to reduce burden of inter-visit care

2024 Clinical Strategic Goals

Inpatient

- 1 Median discharge order hour = 12 PM
- 2 50% or 15% improvement; Goals of Care for Intermediate patients
- 3 70% or 5% improvement; usage for the Care Coordination Powerplan for eligible patients (patients waiting for SNF & inpatient rehab who have been in the hospital for >7 days)

2024 Clinical Strategic Goals

Palliative Care

- 1 Recruit a Section & PaRC supported faculty investigator
- 2 75% of outpatient visits will have a mean lag time of 7 days
- 3 Increase outpatient visits by 5%
- 4 Enhance patient experience through patient & family meaning making activities
- 5 Implement clinical quality capture process for inpatient documentation

2024 Clinical Strategic Goals

Addiction Medicine

- 1 Offer same day/urgent care at IMREP, ideally reduce ER utilization
- 2 Establish direct admit pathways for substance use issues to higher LOC
- 3 Improve early engagement

GIM Residency

Medical Student
Teaching

Strategic Goals



ICRE

Fellowships

Education

Education:

DOM/UPMC/DGIM Educational Leadership



Jen Corbelli
DOM Education Vice Chair



Gregory Bump
UPMC Office of Graduate Medical Education
Designated Institutional Officer



Carla Spagnoletti
DGIM Associate Chief
for Education



Andrea Carter
IM Residency Program Director



Alex Mieczkowski
Med-Peds Residency Program Director

Education:

IM Residency Associate Program Directors

Debbie DiNardo

VA, Outpatient

Gaetan Sgro

VA, Inpatient

Alli DeKosky

Quality & Patient Safety

Jen Corbelli

Competency, Remediation, & Coaching

Anna Donovan

Inpatient Education

Brielle Spataro

Shadyside

Tanya Nikiforova

Ambulatory Education

Diana Samberg

Operations

Education:

Core Faculty/Track Leaders

Thuy Bui

Global Health & Underserved Populations Track

Peter Bulova

International Scholars Track

Amar Kohli

Generalist Track

Georgios Kitsios

ABIM Research Pathway

Malamo Countouris

Clinical Scientist Track

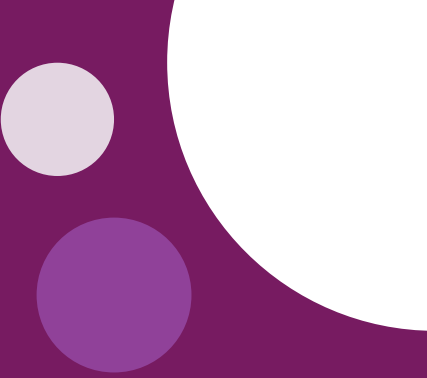
Sarah Tilstra

Women's Health Track

Karen Scandrett

Geriatrics Track

Residency Match Results



Match	20 17	20 18	20 19	20 20	20 21	20 22	20 23
Peer Medical Schools	27	23	31	31	28	30	39
URiM	3	7	4	8	2	17	6
Research Pathway	2	3	1	0	4	4	4
Median RANC Score	70	72	73	74	75	75	77



RANC Score

- Standardized score calculated from clerkship grades, interview scores, board scores, research score, volunteer score
- Consistently & significantly increasing every year

Education:

UPMC IM Residency Notable Accomplishments

- Faculty updates
 - Transition of Program Director role from Jen Corbelli to Andrea Carter
 - New Associate Program Director: Diana Samberg
 - New Core Faculty Member: Ellen Dinerman Bin-Nun
- Intern recruitment season underway
 - Currently 10/22 interview days completed
 - Plan to interview ~500 applications for 53 positions
- Outstanding fellowship match in November 2022 with 41% staying at UPMC
 - Fellowship Match Day 2023 is November 29th
- New initiatives
 - Bias Morbidity & Mortality conference series
 - Root Cause Analysis curriculum
 - 2 new ambulatory pre-clinic conference curricula on obesity medicine, dermatology, & best practices for interpreter use

Education:

UPMC Internal Med - Peds Residency

- 80 graduates since 2003
- Recruited 25th class, graduated 21 classes
- Presentations nationally on program's holistic review process to increase equity in residency application process (with former PD Dr. Alda Maria Gonzaga)
- Our 4th year of Holistic Review



Alex Mieczkowski
Program Director



Allie Dakroub
APD - Outpatient



John Szymusiak
APD - Inpatient

Education:

Med/Peds Core Faculty



Kate Leyens

- UPMC Med/Peds 2021 Graduate
- Med/Peds hospitalist
- Med/Peds interest group liaison
- Mentor to residents
- Significant contributor to recruitment



Kristen Ehrenberger

- UPMC Med/Peds 2020 Graduate
- Director, PERC
- Med/Peds journal club faculty sponsor/mentor
- Mentor to residents
- Significant contributor to recruitment
- PhD – Medical History – multiple publications/presentations



Reed Van Deusen

- Preceptor in Med/Peds clinic
- Mentor to residents
- Significant contributor to recruitment
- Assistant Dean for Human-Based Simulation Education
- IPC Block Director – UPSOM

Education:

UPMC Med/Peds Notable Accomplishments

- Policy & advocacy accomplishments & careers
- Our residents perform very well on boards
 - 100% past 3 years in IM (higher than national pass rates)
 - 98% past 3 years in Peds (higher than national pass rates)
- Program leadership holds national position on Med/Peds Program Direction Association Executive Board of Directors

Education:

Education Office Staff



Mary Margaret Populo



Amanda Auer



Theresa Cullens



Charlene Gergely



Michael Johnson



Katie McMullin



Sean Rieber



Amanda Schlereth



Tiffany Thomas



Lisa Volpe



Kelsey Wallace

Education:

Which of the following ACES fellows had a perfect 5 out of 5 average rating from clerkship students on the item “overall teaching effectiveness” during AY22–23?

● Kate Leyens

● Jordan See

● Lauren Navitsky

● Milad Memari



Education:

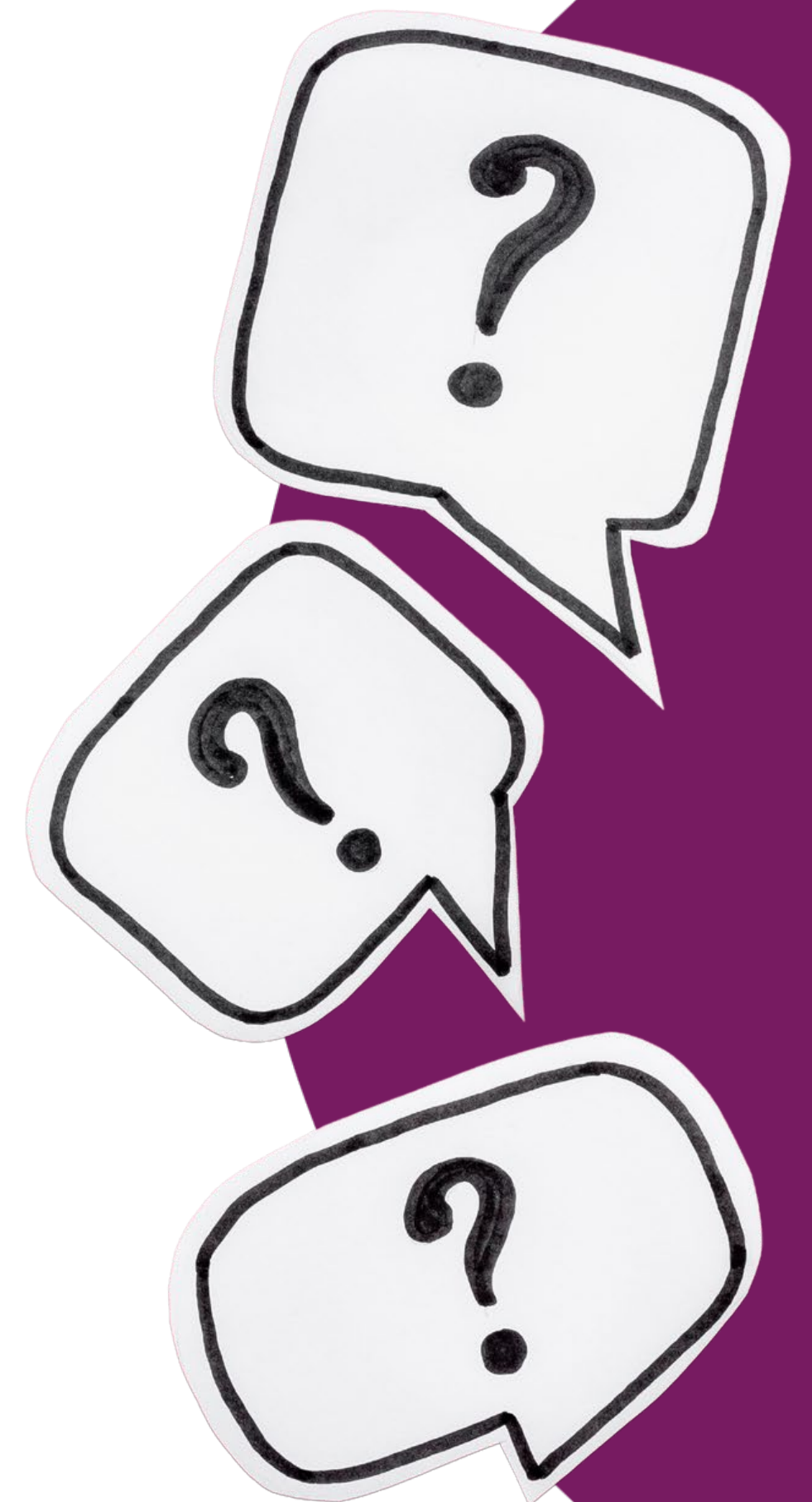
Which of the following ACES fellows had a perfect 5 out of 5 average rating from clerkship students on the item “overall teaching effectiveness” during AY22–23?

● Kate Leyens

● Jordan See

● Lauren Navitsky

● Milad Memari



Education:

ICRE

IGRE

New Leadership Roles

Alison Culyba

Director, Career Education & Enhancement for
Health Care Diversity (CEED) Program

Mary Ackenbom

Director, CEED II Program

Jacquelin Rankine

Assistant Director, PhD Program in Clinical &
Translational Science

Tom Radomski

Director, Postdoctoral Clinical and Translational
Science Fellowship (TLI)

Marie Norman

Director, Online Training Innovations



Education:

Degree - Granting Programs in Med Ed

Curriculum Development

Debbie DiNardo & Missy McNeil

Enhancing Teaching Skills

Sarah Merriam

Making the Most of Mentoring

Missy McNeil

Teaching Communication Skills

Rene Claxton, Bri Rossiter, Eva Reitschuler-Cross,
& Sarah Spinella

Seminar Series

Julie Childers & Sarah Merriam

Survey Design

Lan Yu & Janel Hanmer



Sarah Merriam
Director



Carla Spagnoletti
Associate Director

Education:

New Funding

New Funding

TL1 Admin Supplement:

A Vaccine for Racism (PI: Radomski)

Study Objective:

Adapt, integrate, & evaluate a program to improve racial equity consciousness among TL1 & KL2 trainees



Education:

Training Innovations

Dissemination &
Implementation Science

Leader: Charles Jonassaint

Data Science

Leader: Joyce Chang

ICRE



Education:

Stackables

IGRE

- Pocket-sized, skill-based micro-courses
- Designed specifically for clinical researchers
- Self-paced and convenient
- Mix and match to meet personalized learning goals
- Stack to build essential competencies

The logo for Stackables, featuring three small squares (yellow, green, and blue) stacked vertically to the left of the word "Stackables" in a bold, white, sans-serif font.

Stackables
Personalized Stackable Micro-Credentials in Clinical Research

Education:

DGIM Faculty Development Conference Leaders

DGIM Grand Rounds

- Jillian Kyle
- Neha Etherington

Faculty Case Conference

- Michael Simonson
- Rebecca Green
- Karl Bezak

DGIM Journal Club

- Shumail Fatima



Jillian Kyle



Michael Simonson



Karl Bezak



Neha Etherington



Rebecca Green



Shumail Fatima

People:

DGIM Med Ed Steering Committee



Scott Rothenberger
Co-Chair



Carla Spagnoletti
Co-Chair



Bob Arnold



Raquel Buranosky



Julie Childers



Rene Claxton



Jen Corbelli



Debbie DiNardo



Anna Donovan



Sarah Merriam



Tanya Nikiforova

Education:

Three Rivers Curriculum Educators



Reed Van Deusen

Patient-Centered Care Block Director

Alfred Shoukry

Population & Community Course Director

Drew Klein

Physical Exam Course Director

Ben Sprague & Danielle Heffner

Intro to Clinical Medicine Course Directors

Bri Rossiter

Medical Interviewing Course Director

Julie Childers

Ethics/Law Course Director

Elia na Bonifa cino & Debbie DiNa rdo

Clinical Reasoning Thread Director

Tw ee Bui

Social Medicine Thread Director

Sa ra h Merria m

Leadership Thread Director

Li sa Po dgur ski

Longitudinal Alliance Lead

Be th Oc zyp ok

Longitudinal Alliance Co-Lead

Bo b Ar nold

Longitudinal Educator Lead

El o ho Ufo m a ta

Clinical Skills Preceptor Lead

Allie Da krou b

Clinical Skills Preceptor & Lead

Clinical Skills Preceptors

- Julie Childers
- Lisa Podgurski
- Eric Anish
- Rebecca Green
- Gaetan Sgro
- Linda King
- Michael Simonson
- Chelsea Dahl

People:

Three Rivers Curriculum Coaches



Bob Arnold



Allie Dakroub



Debbie DiNardo



Anna Donovan



Linda King



Sarah Merriam



Eva Reitschuler-Cross



Diana Samberg

People:

UPSOM Leadership



Elia na Bonifa cino
Advisory Dean



Greg Bum p
Associate Dean for
Graduate Med Ed



Ra quel Bura nosky
Associate Dean for
Clinical Education



Mike Elnicki
Director of Med Student
Assessment



Alda Maria Gonzaga
Associate Dean for
Student Affairs



Janel Hanmer
Assistant Dean for Med
Student Research



Leslie Hausmann
Assistant Dean for Med
Student Research



Carla Spagnoletti
Associate Dean for
Faculty Affairs



Eloho Ufomata
Assistant Dean for
Health Equity Education,
Advisory Dean



Reed Van Deusen
Assistant Dean for
Human-Based
Simulation Education

People:

UPSOM Academy of Master Educators Active Members



Carla Spagnoletti
Chair, Academy of
Master Educators



Education:

Medical Student Teaching

Clerkship / Elective Directors

Tw ee Bui

- Global Health AOC
- Bridging the Gaps
- Refugee Health
- Master Diagnosticians

Peter Bulova

- Disabilities AOC

Raquel Buranosky

- Intimate Partner Violence

Allie Dakroub

- Teaching Med Students to Teach
- Med/Peds Ambulatory

Alli De Kosky

- Health Systems Science AOC
- Changing Science, Changing Society
- Scope & Scalpel Faculty Advisor

Debbie DiNardo

- Advanced Clinical Reasoning

Anna Donovan

- Residency Boot Camp

Kristen Ehrenberger

- Medical Nutrition
- Race & Medicine

Alda Maria Gonzaga

- Race & Medicine

Education:

Medical Student Teaching

Clerkship / Elective Directors

Rebecca Green

- Women's Health AOC

Linda King

- Pall Care Communication Skill
- Home-Visiting with Patients
Living with a Life-Limiting Illness

Drew Klein

- Teaching Medical Students to
Teach

Amara Kohli

- Adult Inpatient Medicine Clerkship

Jillian Kyle

- Adult Outpatient Medicine Clerkship

Sarah Merriam

- Women in Medicine Leadership
Book Club

Ra y Ramirez

- Longitudinal Clinical Clerkship 3

Eva Reitschuler-Cross

- Cross-Palliative & Hospice Care
- Home-Visiting with Patients
Living with a Life-Limiting Illness

Bri Rossiter

- What To Do? Common Case Scenarios
for Med Students Entering the Wards

Education:

Medical Student Teaching

Clerkship / Elective Directors

Payel Roy

- Substance Use Disorder in General Medical Settings

Diana Samberg

- Addiction AOC

Michael Simonson

- Acting Internship in Internal Medicine
- Residency Boot Camp – IM Track

Gaetan Sgro

- Humanities & Ethics AOC
- Narrative, Literature, & Experience of Illness
- Being a Physician
- Race & Medicine

Brent Thiel

- Race & Medicine

Sarah Tilsstra

- Advanced Clinical Reasoning
- Women's Health

Andrew Thurston

- Humanities & Ethics AOC
- Narrative, Literature, & Experience of Illness
- Palliative & Hospice Care

Eloho Ufomata

- Principle of LGBTQ+ Health
- Advanced Medical Interviewing

Rachel Vanderberg

- Residency Boot Camp – IM Track

Education:

GIM Fellowships

- Academic Clinician-Educator Scholars (ACES)
- Clinician-Researcher
- Hospice & Palliative Medicine
- Addiction Medicine



Education:

Fellowship Program Leadership

Academic Clinician-Educator Scholars



Anna Donovan
Director



Alli De Kosky
Director, Hospital
Medicine Track



Debbie DiNardo
Director, Women's
Health Track



Brielle Spataro
Site Director,
UPMC Shadyside

Hospice & Palliative Medicine



Ethan Silverman
Director



Eva Reitschuler-Cross
Associate Director

Clinician
Researcher



Janel Hammer
Director

Addiction
Medicine



Julie Childers
Director

Education:

Academic Clinician-Educator Scholars (ACES)

First Year Fellows



Matthew Metzinger



Justin Wang



Ashley Youngs



Leah Koenig



Lauren Navitsky



Jordan See



Dylan Yang

Second Year Fellows

Education:

2023 ACES Fellowship Graduates

Hannah Abumusa

Hackensack Meridian Health

Anita Ganti

Assistant Professor of Medicine, Weill Cornell Medicine

Katie Gavinski

Assistant Professor of Medicine, Medical College of Wisconsin

Kate Leyens

Clinical Assistant Professor of Medicine, Pitt GIM

Mila Memari

Assistant Professor of Medicine, UVA School of Medicine



Education:

Clinician Research Fellowship



First Year
Fellow



Nicole Luche

Academic interests: healthy equity, implementation science, & chronic disease management

Tim Bober
Academic interests: mobile health implementation, primary care, health equity, & health literacy initiatives



Second Year
Fellow

Education:

Hospice & Palliative Medicine Fellowship



Vasilii Bushunow



Rebecca Ellis



Taylor Huntington



Courtney Wagner



Amit Puja ri

Education:

2023 HPM Fellowship Graduates



Nisha Shah
Environmental Health
Fellow & Hospice Physician



Colleen Menegaz
Methodist Le Bonheur Healthcare



Mike Certo
Northwestern University

Education:

Addiction Medicine Fellowship



First Year
Fellow



Raissa Berry

Maggie Shang



Second Year
Fellow

Education:

2023

Education

Strategic

Goals

A	Research track residency – match 4 residents
B	GIM fellowship – recruit 2 research fellows
B	ACES – continue with competitive match
A	Pall Care – continue with competitive match
B	Recruit 2 addiction medicine fellows
A	Maintain high quality recruitment
F	Recruit 2 clinician-educator faculty

Education:

2024 Education Strategic Goals

- 1 Research track residency – match 4 residents
- 2 GIM fellowship – recruit 2 research fellows
- 3 ACES – continue with competitive match
- 4 Pall Care – continue with competitive match
- 5 Addiction Med – recruit 2 fellows
- 6 Recruit 3 clinician-educator faculty

Centers & Institutes



Research Grants



Publications



Strategic Goals

Research



GIM Director of
PHD Faculty Affairs
Joyce Chang



Research:

Research Core Administrative Staff



Kristee Rosen



Deborah Alpern



Candice Ford



Ta'Sey Harmon

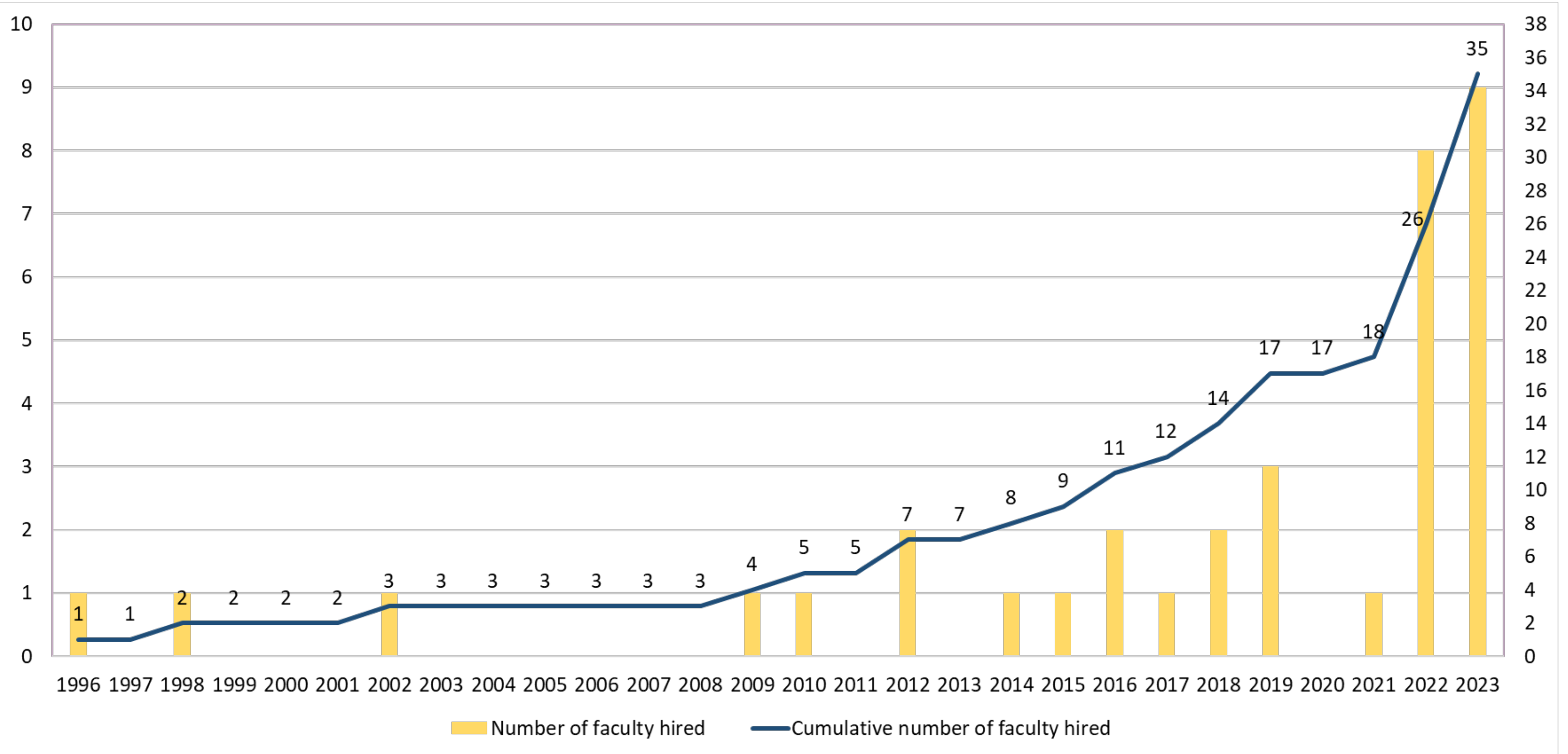


Monica Loughran



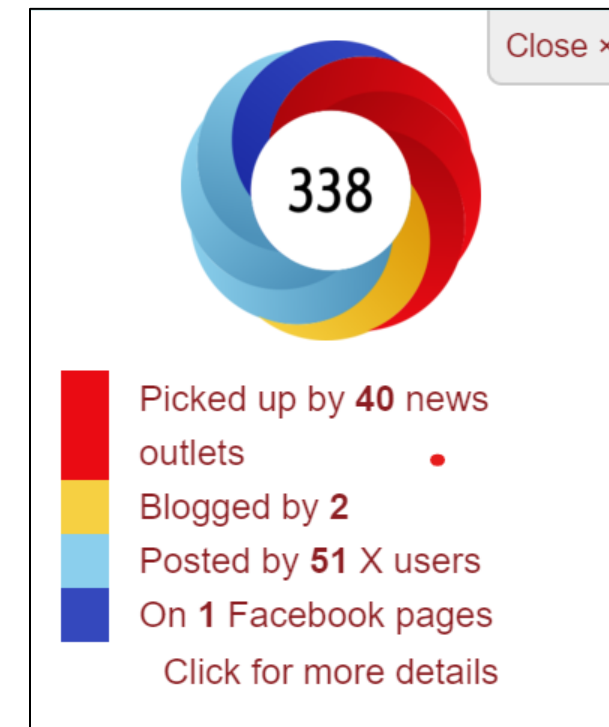
Anita Minahan

PhD Faculty Joining By Year



Research:

Of the following, whose publication had the highest Altmetric score?



● Martina
Anto-Ocrah

● Scott
Rothenberger

● Ann-Marie
Rosland

● Kathleen
McTigue

Altmetric scores are a weighted count of the attention that a scholarly article has received, & is derived from three main factors: Volume, Sources, Authors.



Research:

Of the following, whose publication had the highest Altmetric score?

● Martina
Anto-Ocrah

● Scott
Rothenberger

● Ann-Marie
Rosland

● Kathleen
McTigue



Research:

Publications

375 new publications

- 38 published in high-impact journals
- 44 with an Altmetric score >100
- 19 with an Altmetric score >50



Scott Rothenberger's biostatistics work on a paper in JAMA Pediatrics

In top 5% of all research outputs scored by Altmetric and High Attention Score compared to outputs of the same age (98th percentile)



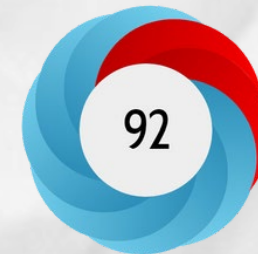
Martina Anto-Ocrah's paper on COVID-19 & menstrual changes

In top 5% of all research outputs scored by Altmetric and High Attention Score compared to outputs of the same age and source (99th percentile)



Gretchen White & Doris Rubio's paper on the impact of social unrest due to systemic racism on underrepresented postdocs & early-career faculty

Among the highest-scoring outputs from this source (# 12 of 506) and High Attention Score compared to outputs of the same age and source (99th percentile)



Payel Roy and Jane Liebschutz's paper on an inpatient addiction medicine consult

In top 5% of all research outputs scored by Altmetric and High Attention Score compared to outputs of the same age and source (97th percentile)



Bob Arnold, Ken Smith, & Yael Schenker's paper on pall care and advance care planning

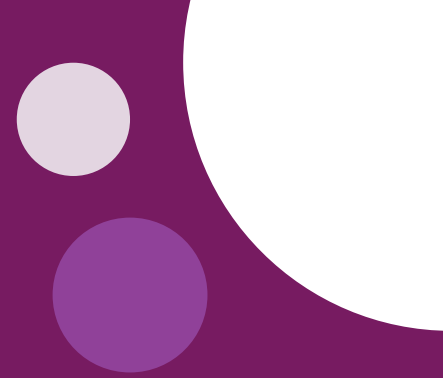
98 news outlets 2 blogs 28 X users 3 Dimensions 16 Mendeley



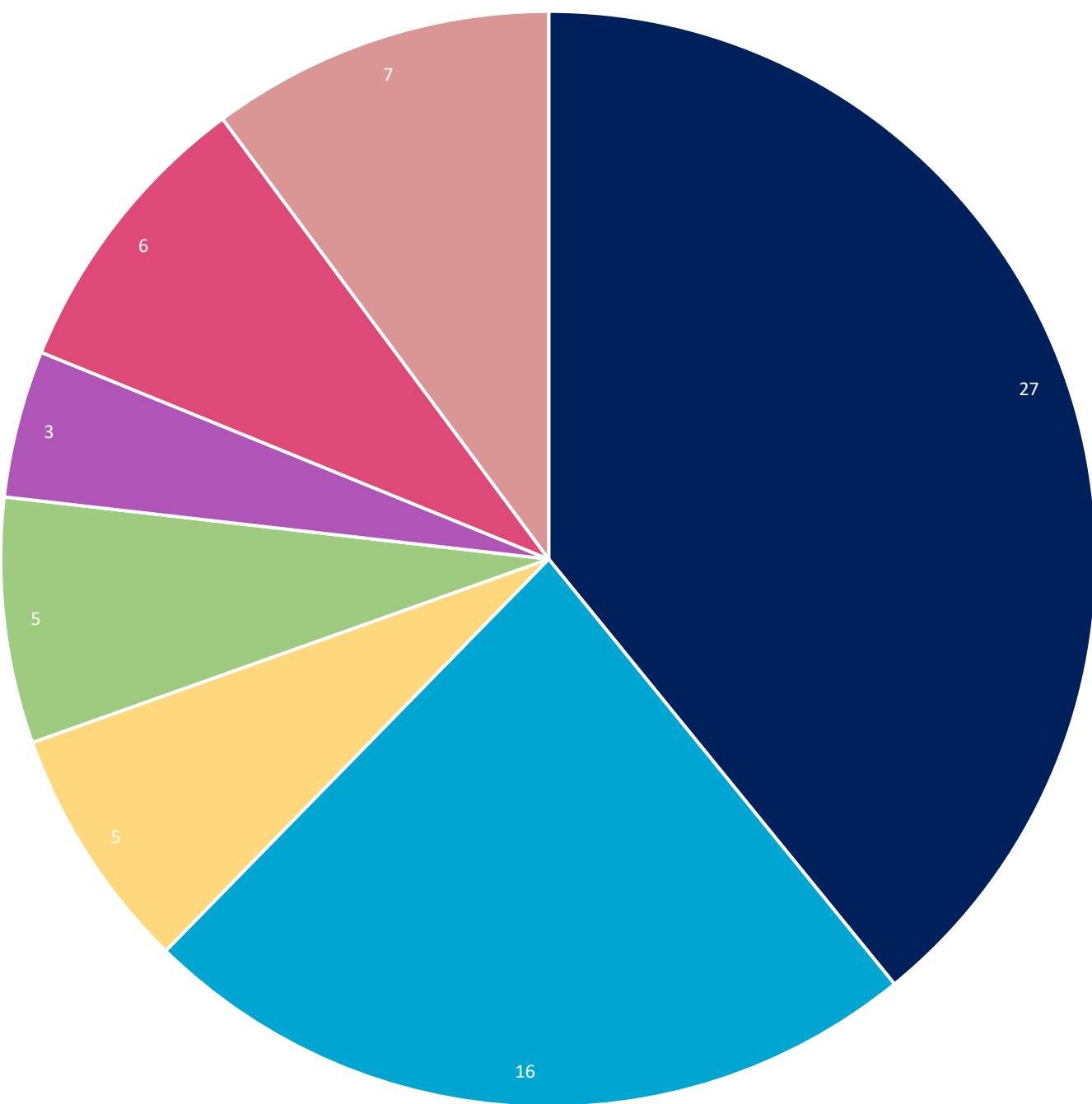
Ann-Marie Rosland's paper on a health coaching intervention in JAMA Network Open

In top 5% of all research outputs scored by Altmetric and High Attention Score compared to outputs of the same (99th percentile)

Submitted Research Grants - FY23

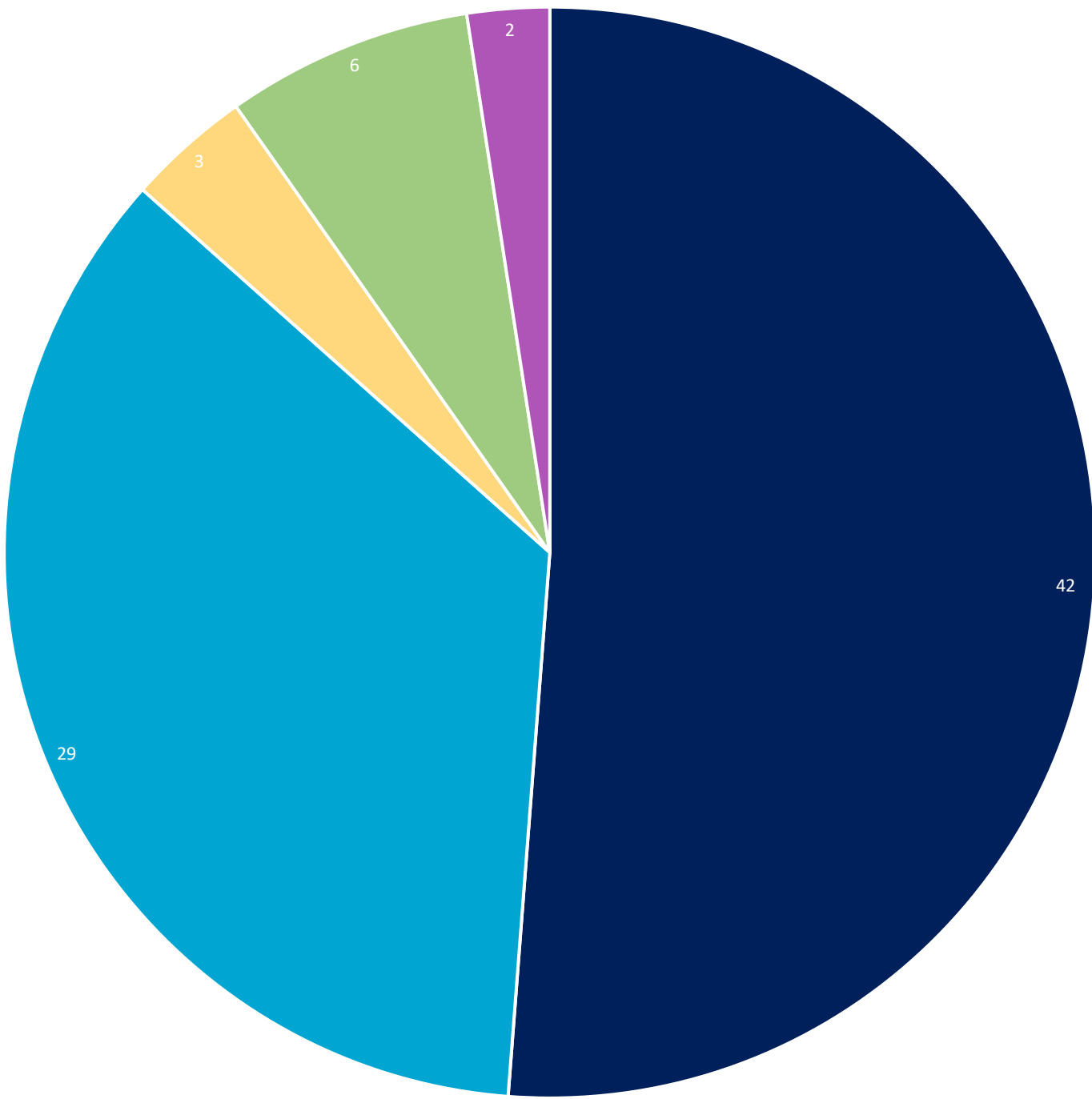


PI (n=69)



- R
- Other (Federal)
- PCORI
- Foundation
- Industry
- Other (Non-Federal)
- K

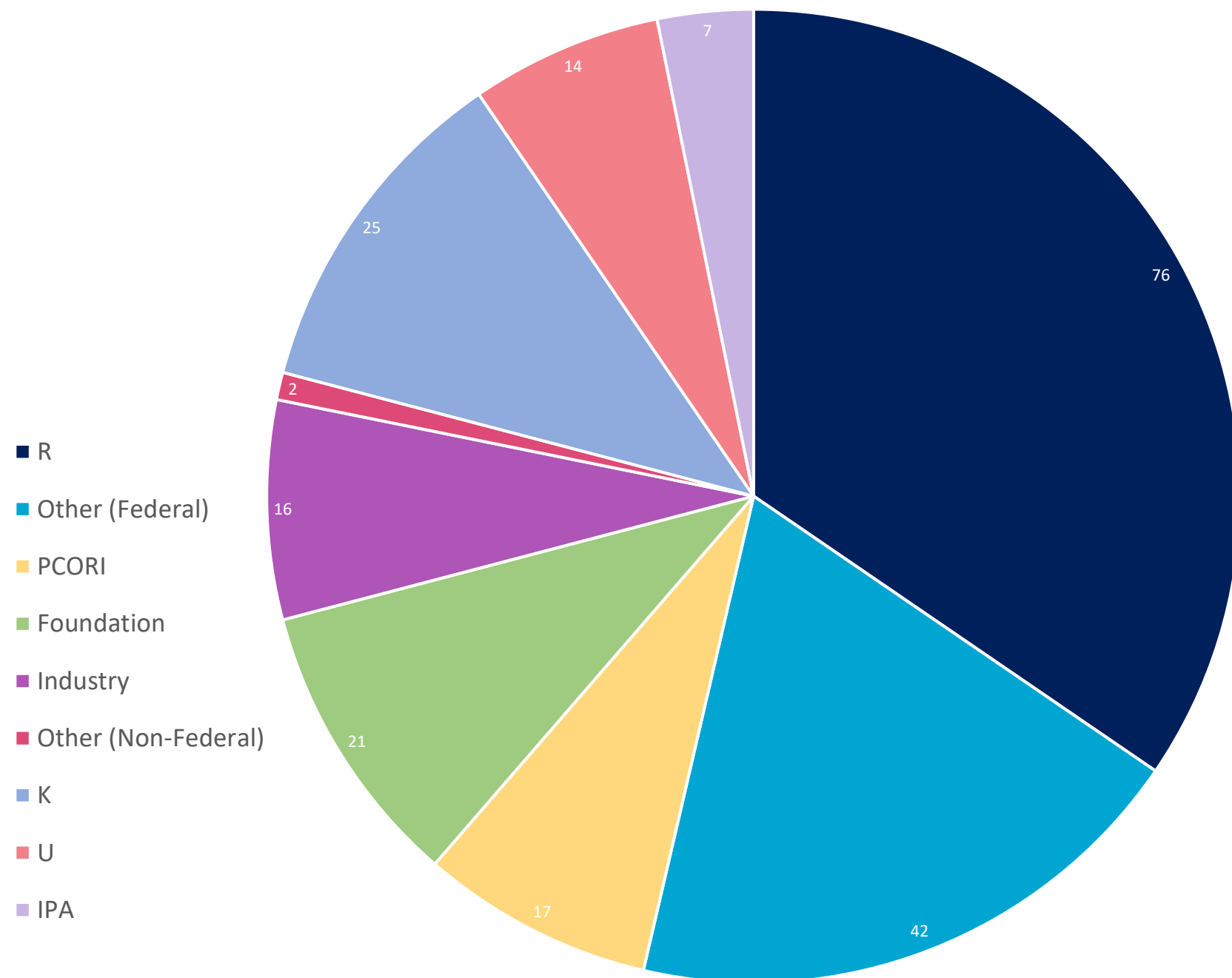
Co-I (n=82)



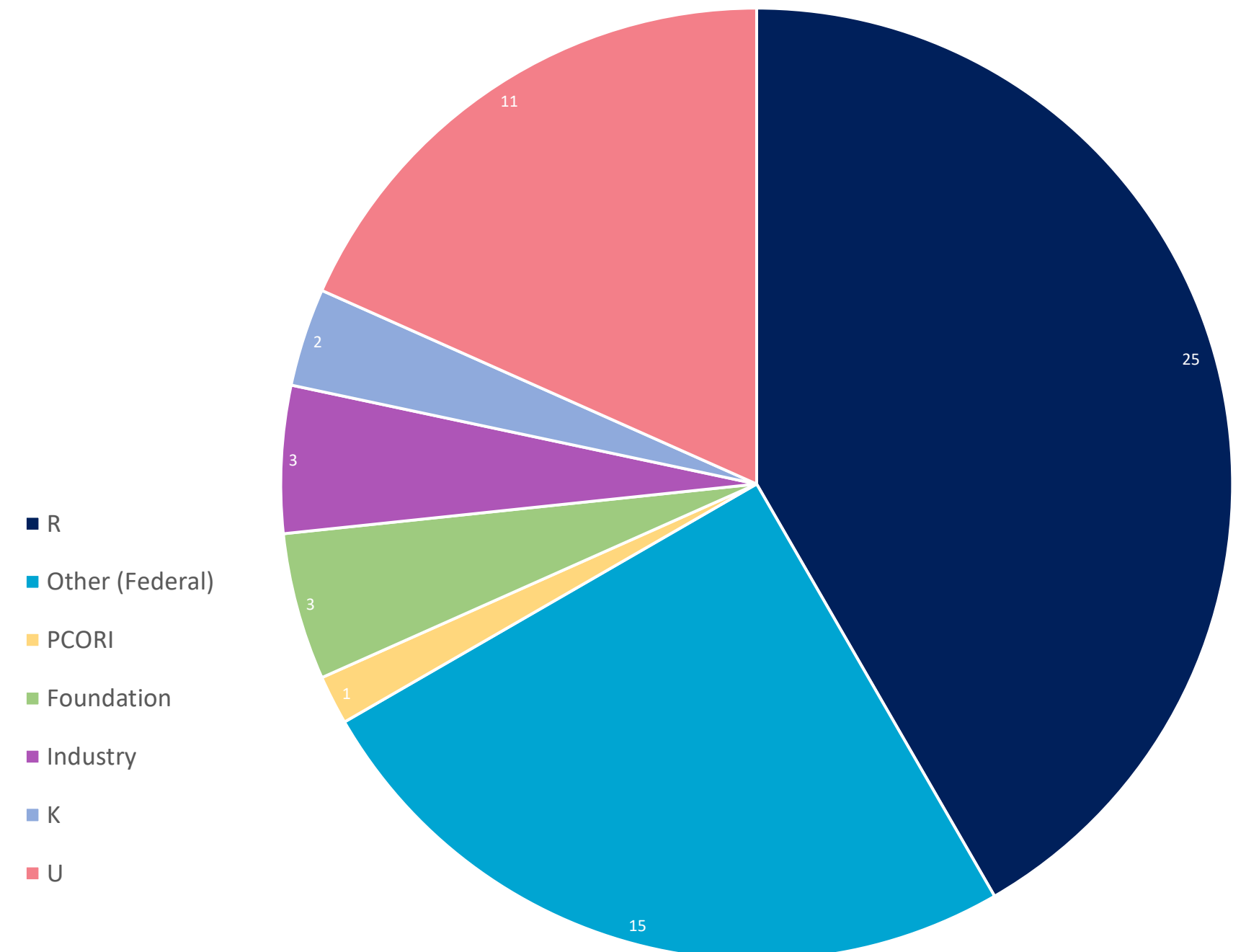
- R
- Other (Federal)
- PCORI
- Foundation
- Industry

Active Research Grants - FY23

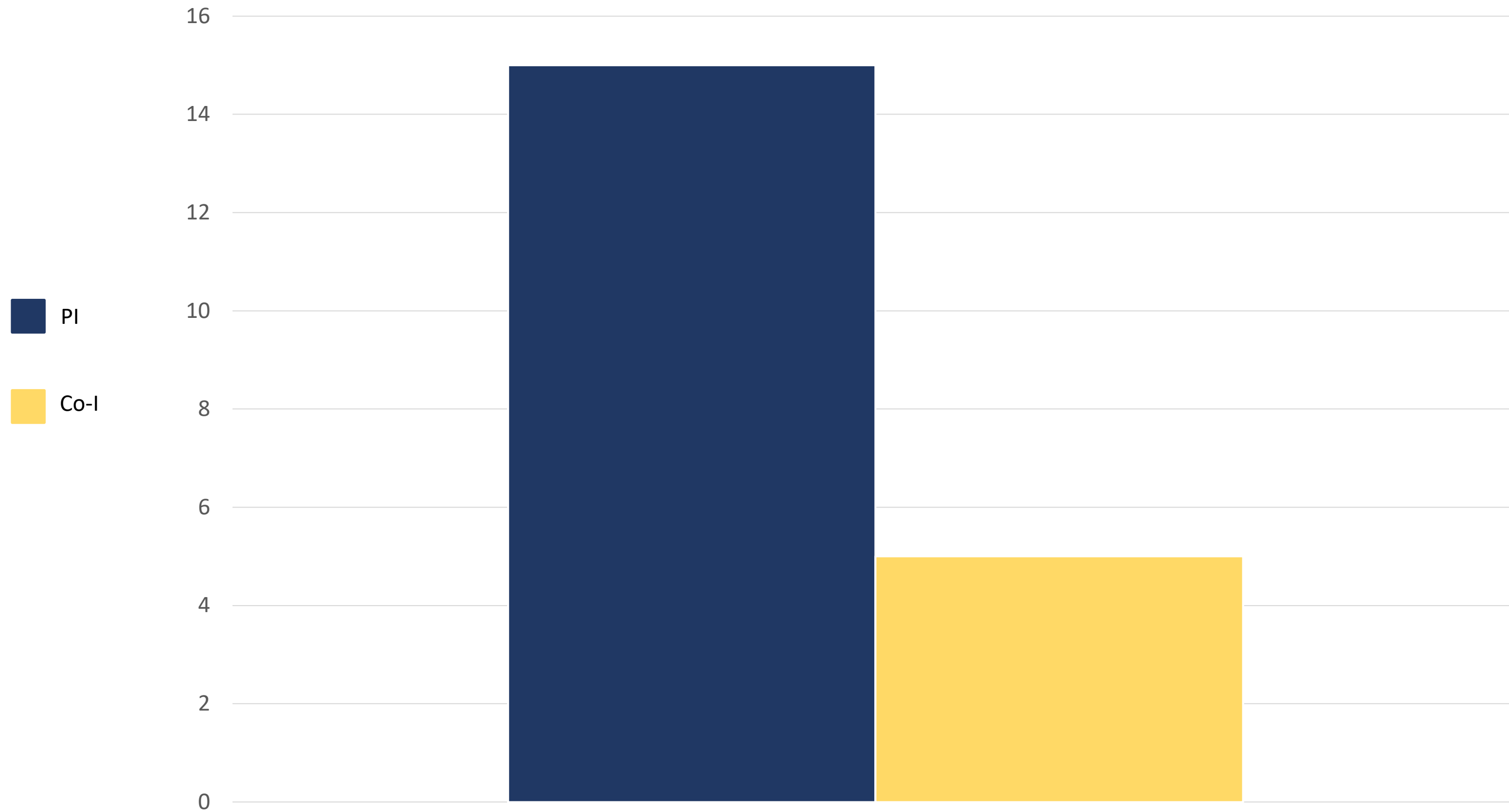
PI (n=220)



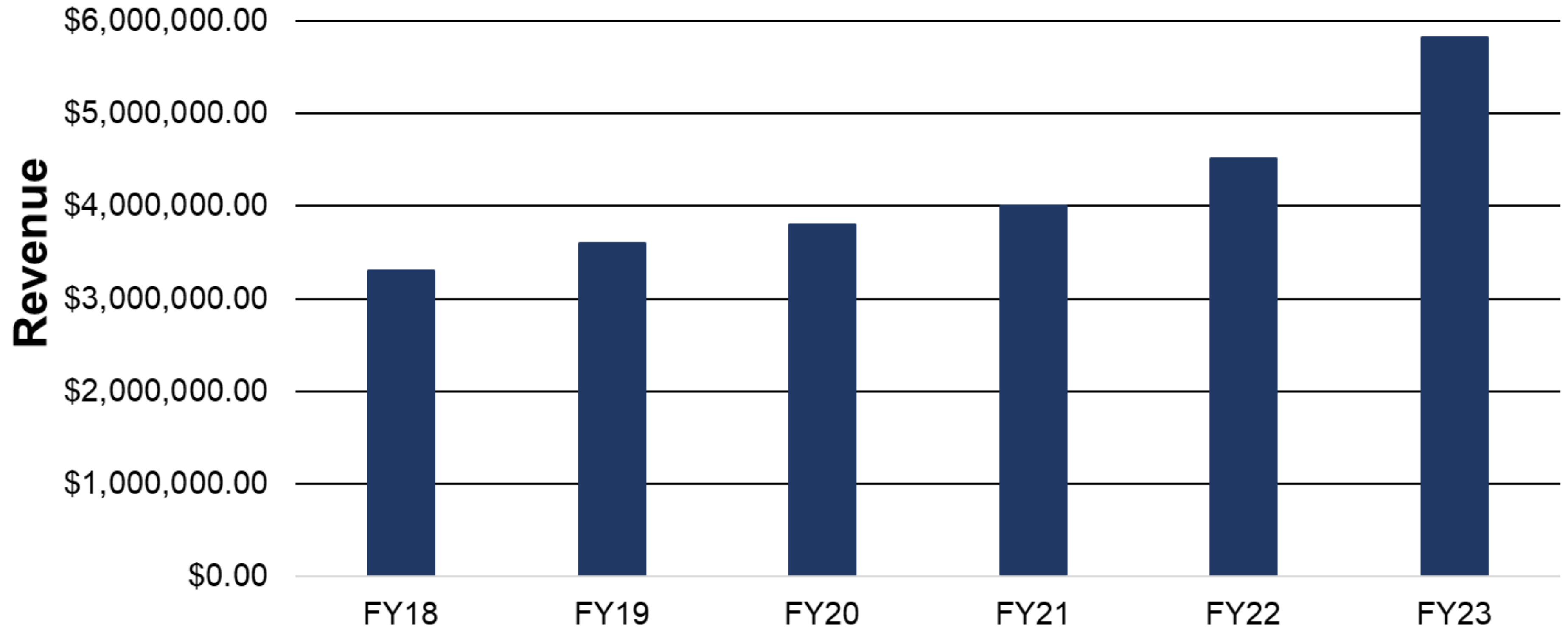
Co-I (n=60)



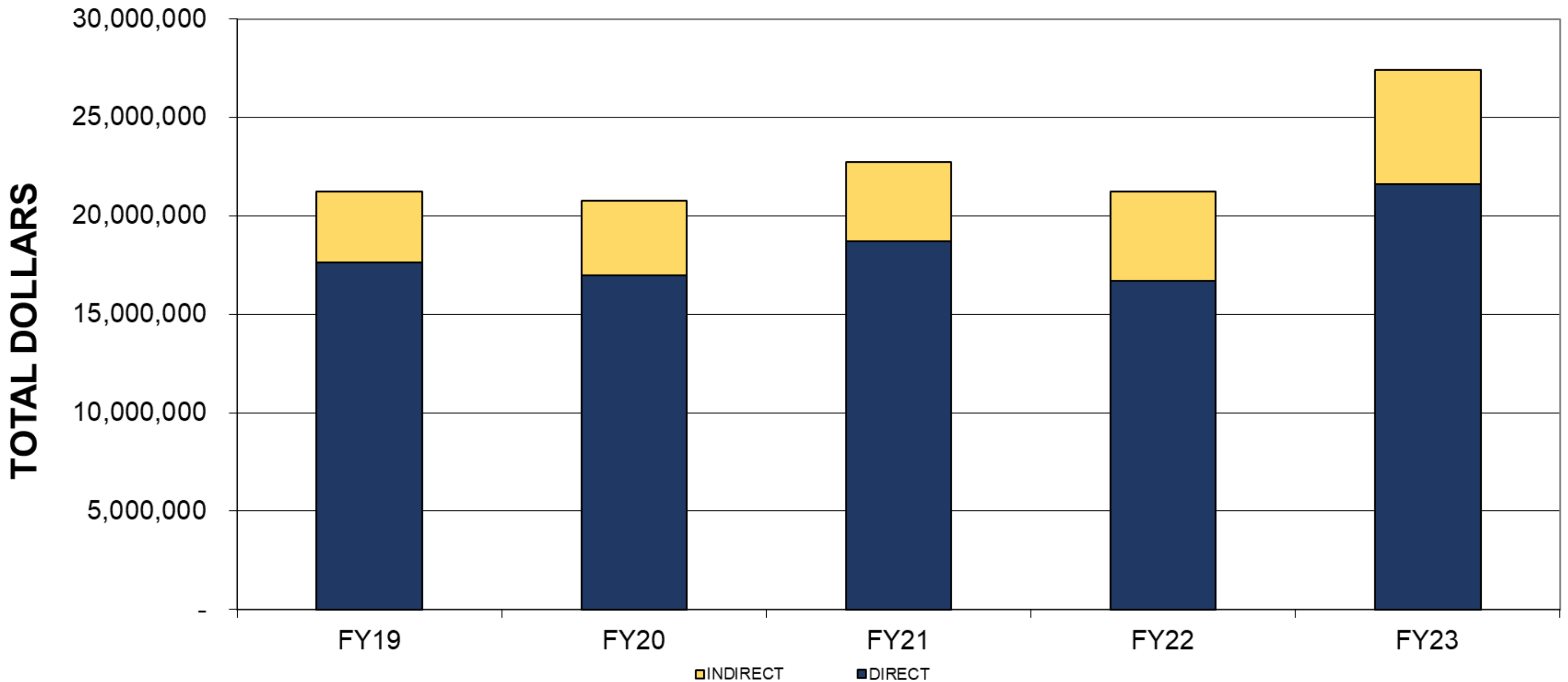
Active VA Research Grants - FY23



Gross Indirect Revenue



Research Expenditures



Research:

Notable CRHC Grants

Addressing Factors Related to Disparities in Vasectomy

NICHD R01: Sonya Borrero

Toward Measures & Behavioral Trials for Effective Online AUD Recovery Support

NIAAA K01: Jason Colditz

The Broken Drug Supply Chain: The Impact of COVID-19 on Drug Shortages & Veterans Health

VAHSR&D: Bernie Good & Katie Suda

Peer support for adolescents & Emerging adults with Sickle cell pain: promoting Engagement in Cognitive behavioral therapy (PRESENCE)

NINDS UG3: Charles Jonassaint & Cristina Murray-Krezan

A Digital Intervention to Support the Health of New Mothers & Their Infants

PA DHS: Tamar Krishnamurti

Research:

Notable CRHC Grants

Characterizing Obesity & Understanding Stakeholder Perspectives in a Large Integrated Health System

Pfizer. Kathleen McTigue & Megan Hamm

Mentoring the Next Generation of Researchers at the Intersection of Opioid Use Disorder & Chronic Pain

NIDA K24: Jessie Merlin

Empowering Adults with Diabetes: Achieving Self-Management Success Through Data-Driven Behavior Change

NIDDK R01: Ann-Marie Rosland

Comparative Risk of Oral Complications Associated with Medications for Opioid Use Disorder: A Mixed Methods Approach

NIDA R01: Payel Roy

Informing Policies to Support Safe & Equitable Opioid Access for Patients with Advanced Cancer Near End of Life

AHRQ R01: Yael Schenker

CRHC Data Center



Data Management/
Information Systems
Core Lead: Tim Bragg



Bio stats
Core Lead: Christina Lalama

Research:

Qualitative, Evaluation, & Stakeholder Engagement (QualEASE)

- 30+ projects
- Stakeholder and Community Engagement
- Bringing in 2 additional faculty members with methodological expertise in:
 - Community-based participatory research
 - Phenomenology

Research:

Center for Clinical Trials & Data Coordination

CCDC is the Data Coordinating Center for 12 RCTs, including:



PIs: Merlin, Kraemer



PI: Abebe



REBIRTH

PI: Mcnamara



PI: Jonassaint



HumAn-1

PI: Luo



Research:

CRHC Data Center & CCDC

New Hires & Promotions



Yi-Fan Chen, PhD
Biostatistics Faculty



Susan Copelli
Clinical Trials Manager



Darae Johnson
Health Sciences Diversity
Research Fellow



Michelle Lancet
Promoted to DCC
Core Lead



Madison Morgan
Clinical Trials Manager



Sam Richardson
Research Specialist



Rongrong Wang, PhD
Data Analyst



Tianxiu Wang, PhD
Biostatistics Faculty



Yihao Zheng, MS
Data Analyst

Research:

2023

Research

Strategic

Goals

A	Grants: Submission of 8 R01 or equivalent
A	Publications: 20 high impact (IF >10)
C	3 Diversity Supplements
B	Retention of K to R Faculty
A	Recruit Clinician Investigator (Addiction, Pall Care)
A	Recruit PhD Biostatistician
C	Obtain T32 to support GIM fellows

Research:

2024 Research Strategic Goals

- 1 Submit 8 R01 or equivalent grants
- 2 20 high impact (IF >10) publications
- 3 2 diversity supplements
- 4 Retention of K to R faculty
- 5 Recruit clinician investigator (addiction, pall care)
- 6 Recruit 1 PhD Biostatistician
- 7 Obtain T32 to support GIM fellows
- 8 Hire Division Administrator for Research



Clinical Care



Strategic Goals

VA Pittsburgh Health System

Research:

Promotions & New Employees



Dan Boucek
Director, Inpatient Operations
for Hospital Medicine



John Jochum
Medical Director CLC



Sarah Merriam
Director, ICRE Degree
Granting Programs



Visala Mulu
Section Chief, IMPACT
Director, IMPACT, VISN4



Jeb Northern
Chief Wellness Officer



TJ Walk
Chair of Clinical
Systems Redesign



Dave Zielinski
Acting Assistant Deputy
Chief of Medicine

VA- Based Educational Innovations

Resident as Preceptor - Dylan Fortman, MD

- Piloted this year
- To expand in coming year

Ambulatory Care Intern Bootcamp

- Now in 3rd year
- PT assisting with hands on musculoskeletal training



Clinical Care

Erika Hoffmann

- Acting Assistant VP for Gen Med & Medical Education
- Section Chief, Outpatient General Medicine



New Clinical Programs

PT Embedded in Primary Care

- Same day consultation
- PT pilot – Battlefield Acupuncture in primary care

Buprenorphine for Chronic Pain in Patients with Comorbidities that Make Opiate Use Difficult for Pain Control

- Multidisciplinary clinic established in primary care
- VISN employee development regarding use of buprenorphine for chronic pain

New Clinical Programs - Whole Health

Employee Wellness

- Chief Wellness Officer program to focus on clinician burnout & well-being & is serving as the pilot site for VISN4 for the CWO role

Whole Health

- Gerofit -> exercise program that promotes health & wellness for Veterans 65 years of age & older
- Vetfit's mission is to assist our nation's younger Veterans to improve fitness, mental health, & well-being

New Clinical Programs - Women's Health

MOVE Clinic Reorganization Underway

- MOVE -> 16-week educational foundation on lifestyle management
- Resources for long term weight management, including health coach, exercise physiologist, dietician, pharmacist, & physician

Reproductive Health Program (Multidisciplinary)

- Maternity Care Coordination
- Contraceptive Counseling

Long Haul COVID Clinic

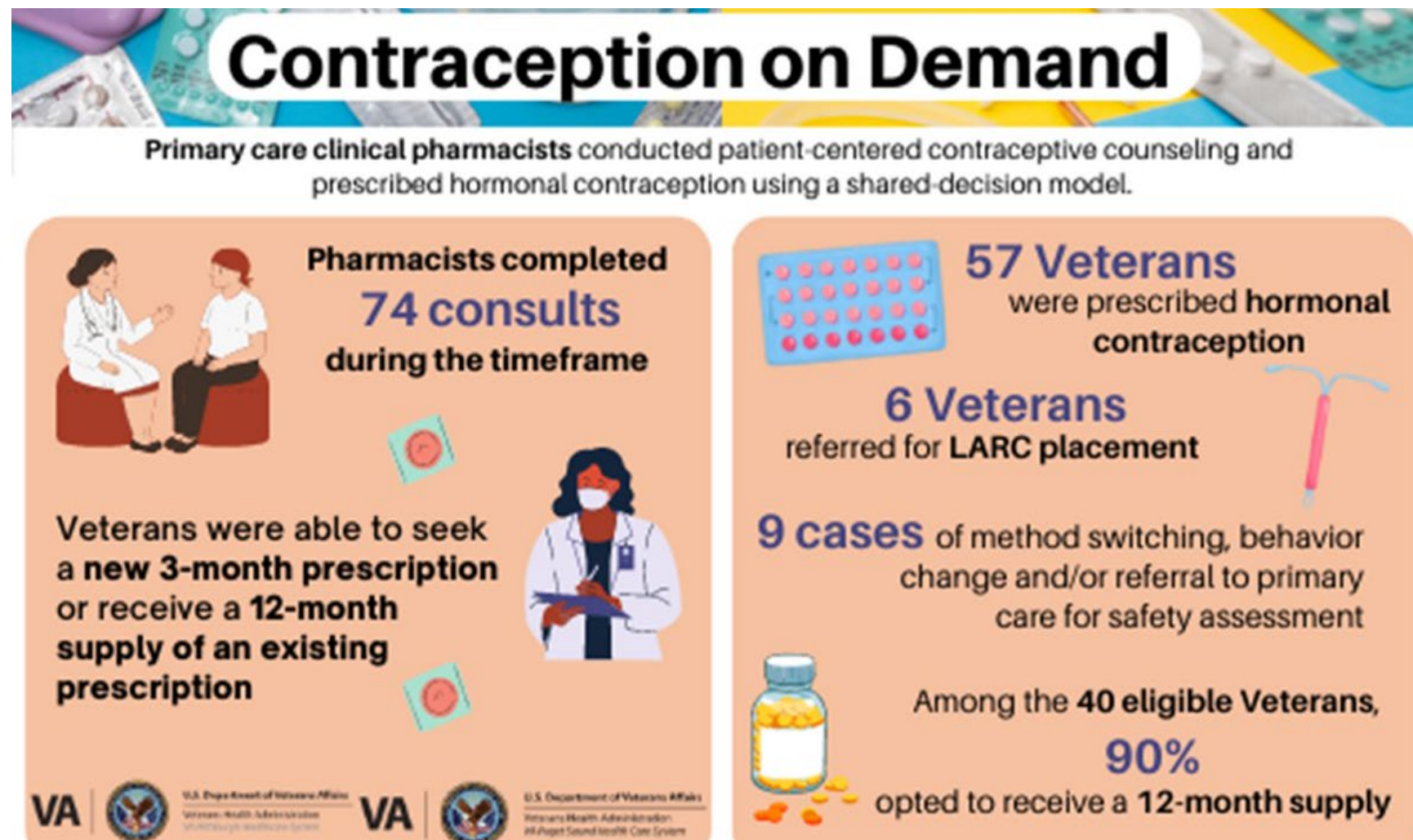
- Created pathway to spread to the VISN

Starting IMPACT Hospitalist program to reduce length of hospital stay, decrease post-op readmissions, & streamline discharge process

VHA:

Contraception on Demand (COD)

- Expands contraceptive access for Veterans
- Replicating across multiple facilities
 - ADOPTIONS: 7 successful, 3 in progress



Preventing Post-Operative Readmissions with Surgical Safety Net

- Team built a high-reliability process within IMPACT, IDing at-risk patients using prediction model
- Multidisciplinary, multimodal team
- Prevented readmissions, improved Veterans' trust in VAPHS, & increased satisfaction
- 3 adoptions in VISN 4



Center for Health Equity Research & Promotion (CHERP) Mike Fine, Director

- 33 investigators (+4 incoming)
- 11 post-docs
- 44 staff

VHA:

CHERP

New

Associate Directors

Leslie Hausmann

Katie Suda



VA Operations & Community Partnerships

Leslie Hausmann

Evaluating the impact of the Institute for Veterans & Military Families (IVMF) AmericaServes Network

Ann-Marie Rosland

Evaluating PACT implementation on care for patients at high-risk of hospitalization & poor health outcomes with the Office of Primary Care

Walid Gellad

Developing & evaluating the roll-out of quality enhancement tools with VA Center for Medication Safety (VAMedSAFE)

VHA:

2023 VA Strategic Goals

- A** Move women's health & outpatient clinics to Aspinwall
- B** Streamline rounding schedules to improve residents' satisfaction & prevent duty hour violations
- A** Hire new Associate Director of CHERP
- B** Recruit Clinician Investigator(s) with an interest in health equity research
- A** Assemble a leadership team to plan & oversee CHERP's competitive renewal

VHA:

2024 VA Strategic Goals

- 1 Submit a successful CHERP renewal application
- 2 Submit 8 applications for VA funding
- 3 Receive funding for 2 VA funding applications
- 4 Recruit an investigator with a research focus on health equity
- 5 Med Student rotate in UD Primary Care s/p MOVE
- 6 Establish VetFit
- 7 Hire academic hospitalist
- 8 Train a team provider as a lactation consultant



Awards



Honors

Awards & Honors

Awards & Honors:

Promotions & Appointments



Keith Lagnese

Clinical Associate Professor

John Szymusiak

Associate Professor of Medicine

Kathleen McTigue

Professor with Tenure

Rebecca Mancoll

Clinical Associate Professor

Kaleb Abebe

Professor with Tenure

Jessie Merlin

Professor with Tenure

Charles Jonassaint

Associate Professor with Tenure

Thuy Bui

Professor of Medicine

Marie Norman

Professor of Medicine

Cristina Murray-Kreza n

Associate Professor of Medicine

Julie Childers

Professor of Medicine

Mike Fine

Distinguished Professor of Medicine



George H. Taber Chair in
General Internal Medicine
Carla Spagnoletti



Awards & Honors:

UPSOM 2023 Awards



Rachel Vanderberg, MD

AWARDED A
UPSOM EARLY CAREER
EDUCATOR AWARD



Allie Dakroub, MD, MS

AWARDED THE
LEONARD TOW HUMANISM IN
MEDICINE FACULTY AWARD



*Drs. Linda King &
Eva Reitschuler-Cross*



AWARDED THE
UPSOM EDUCATION AWARD FOR OUTSTANDING
PROFESSIONAL ENRICHMENT COURSE

Awards & Honors:

UPSOM 2023 Awards



Awards & Honors:

2023 UPMC Physician Excellence Awards

Christopher Wynkoop, MD

awarded the
UPMC NEW PHYSICIAN EXCELLENCE
IN CLINICAL CARE AWARD



Amar Bansal, MD

awarded the
UPMC EARLY- TO MID-CAREER
PHYSICIAN EXCELLENCE IN
CLINICAL CARE AWARD



Anita Leon-Thong, MD

awarded the
UPMC EARLY- TO MID-CAREER
PHYSICIAN EXCELLENCE IN
CLINICAL CARE AWARD



David Demoise, MD

awarded the
UPMC SENIOR PHYSICIAN EXCELLENCE
IN CLINICAL CARE AWARD



Awards & Honors:

2023 UPMC Physician Excellence Awards



Awards & Honors:

Faculty

Kaleab Abebe

- Society for Clinical Trials Fellow

Sonya Borrero

- Academy Health Annual Research Meeting Plenary Speaker

Jodie Bryk

- ACP PA Eastern Chapter Pressman Award for Distinguished Service

Hailey Bulls

- HEAL Director's Trailblazer Award Honorable Mention

Greg Bump

- Served on USMLE Patient Safety TMDC

Joyce Chang

- ICRE Excellence in Teaching Award

Jen Corbelli

- ACP Laureate Award

Allie Dakroub

- AAIM MPPDA Executive Committee Member

Mike Elnicki

- JGIM Editor-in-Chief
- Served on NBME Forms Review & Remote Pool Review Group
- Served on NBME Subject Examination Task Force

Alda Maria Gonzaga

- Castle Connolly Top Doctor

Raagini Jawa

- AMERSA John Nelson Chappel Best Curriculum, QI, & Program Abstract

Charles Jonassaint

- Society of Behavioral Medicine Board of Directors

Amar Kohli

- SGIM Mid-Atlantic Leadership Award for Excellence in Clinician Education



Awards & Honors:

Faculty

Kate Leyens (as a fellow)

- Rita M. Patel GME Leadership Conference Best Poster Awardee
- Rita M. Patel GME Leadership Conference Oral Presenter

Jane Liebschutz

- UPP Board of Directors
- AMERSA Anderson Spickard, Jr. Excellence in Mentorship Award

Cristina Murray-Kreza n

- PCORI Clinical Trials Advisor Panel Chair

Tanya Nikiforova

- SGIM LEAD Program Faculty

Aimee Pickering

- Pepper Scholars Program

Tom Radomski

- DOM Research Day Outstanding Poster Presentation
- ICRE Distinguished Alumnus Award in Clinical Research

SHY3 Pav

- 2023 UPMC Presbyterian Shadyside Quality & Safety Fair – 2nd Place

Michael Simonson

- ACP PA Eastern Chapter Pressman Award for Distinguished Service

Brielle Spataro

- SGIM LEAD Program

Holly Thomas

- SGIM David E. Rogers Junior Faculty Education Award

Reed Van Deusen

- Served on NBME Intro to Clinical Medicine, Physical Diagnosis, & Communication TMDC
- Served on NBME Communication Competency Meeting



Awards & Honors:

Section of Palliative Care

Julie Childers

- Selected as next AAHPM Sponsor for the Scholars for Equity in HPM Program

Rene Claxton

- 2023 ASP Eric G. Neilson, MD, Leadership in Specialty Internal Medicine Award

Sherry Gunn

- UPMC Award for Commitment & Excellence in Service (ACES)

Lisa Podgurski

- 2022 AAHPM Fellow of the Academy

Eva Reitschuler-Cross

- Tara E. Cook Memorial Teaching Award



Awards & Honors:

Palliative Research Center (PaRC)



Gina Piscitello

- Beckwith Center Shared Decision Making Physician Fellowship
- AAHPM Research Scholars Award (1 in 6 nationally)

Jessie Merlin

- Executive Leadership in Academic Medicine (ELAM) Fellow
- NIH Heal Director's Award for Mentorship

Yael Schenker

- UPMC Hillman Cancer Center 2023 Merrill J. Egorin Excellence in Scientific Leadership Award
- Graduated from the ELAM Program
- Cancer Journal Symptoms Control & Palliative Care Section Editor

Haley Bulls

- Society of Behavioral Medicine Diversity Institute for Emerging Leaders



Awards & Honors:

Veterans Health Administration



Debbie DiNardo

- SGIM Frederick L. Brancati Mentorship & Leadership Award Nominee
- SGIM LEAD Faculty

Erika Hoffman

- ACP Western Region Clinical Practice Award

Sarah Merriam

- VA Pittsburgh David M. Worthen Rising Star Award Nominee

Gaetan Sgro

- UPSOM Medical Student Research Mentoring Merit Award
- VA Pittsburgh David M. Worthen Rising Star Award for Innovation in Health Professions Education Nominee
- JGIM Healing Arts Associate Director



Awards & Honors:

CHERP

Leslie Hausmann

- 2023 Society of Behavioral Medicine Fellow

Katie Suda

- 2023 VAPHS Investigator Excellence in Research Award
- 2023 American College of Clinical Pharmacy (ACCP) Infectious Disease PRN Distinguished Investigator Award
- Journal of the American Pharmacists Association Outstanding Author



Events



Faculty
Development



New Additions



Equity &
Anti-Racism



Philanthropy



SOD Awards

Fa c u l t y L i f e

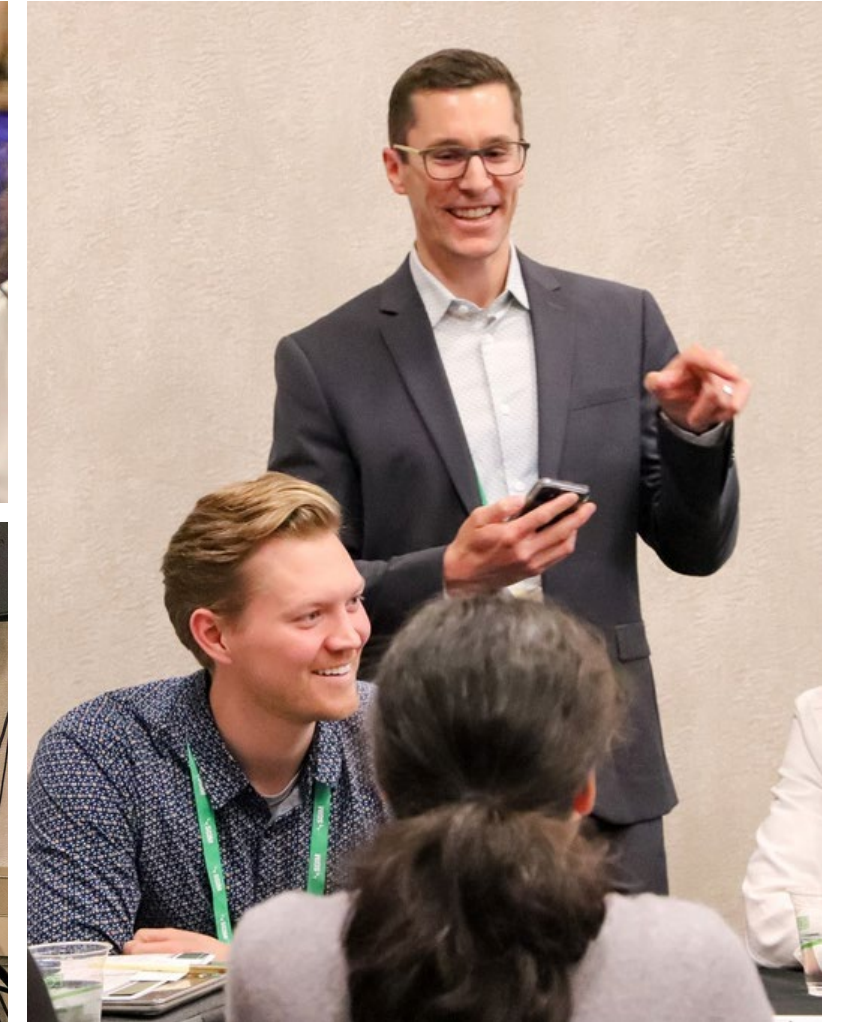
Faculty Life:

Annual Picnic



Faculty Life:

SGIM 2023



GIM Equity & Anti-Racism Initiatives

Race & Social Determinants of Equity, Health, & Well-Being Cluster Hire & Retention Initiative

- 4 faculty hires: Martina Anto-Ocrah, PhD; Tasha Alston, PhD, MSW; Charles Mupamombe, MD; Lakeya McGill, PhD

The Health Sciences Diversity Scholars Program – HSDSP

- For individuals who have completed undergrad & are committed to a career in biomedical, health-related research
- UPSOM Fellowship Program: Kaleab Abebe, Ph.D.
- DGIM sponsoring a fellow

CTSI & Bidwell Training Center

- Co-developed a new program for translational workforce diversification & development to foster diversity & inclusion in clinical research
- The STRickland Research Training (START) program provides students in the Medical Assistant program at Bidwell a career path in clinical research



Tasha Alston

GIM members made up half of the Dean's Anti-Racism Task Force/Counsel

Faculty Life:

White Coats For Black Lives



Faculty Life:

Equity & Anti-Racism - Culture

Goals:

- Cultivate a culture of justice, equity, diversity, and inclusion among everyone within our division through community-building initiatives
- Continually seek to learn more about and justly improve the professional experience of faculty and staff from underrepresented backgrounds and groups within our division



<- Consider joining our team !

And/or send us your ideas for future initiatives and events!



Antiracist Task Force



Faculty Life:

Equity & Anti-Racism - Culture

Recent Initiatives & Collaborations

- Semi-annual Beltzhoover Gardening & Fundraiser
 - Raised over \$600 – thank you!
- DGIM Pirates games
- Division outreach lunches
- White Coat Kneel
- Day of Gratitude Culture Potluck
 - Mark your calendars: Thursday, November 30, 6-8 PM 9W



Faculty Life:

2023 Equity & Justice Strategic Goals

A

Dedicate at least 1 conference (each) to anti-racism & social justice education: GIM Grand Rounds, CRHC Conference, GIM Journal Club, Pall Care Conferences

C

Benchmark BIPOC hiring & create goals

B

Standardize hiring practices

B

Continue mentoring program of BIPOC faculty & staff

B

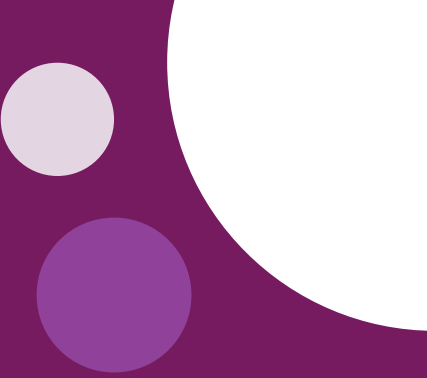
Continue anti-racism committees: research, education, culture

VHA:

2024 Equity & Justice Strategic Goals

- 1 Align initiatives with OEDI
- 2 Conduct Climate Survey with suggestions on improvement
- 3 Offer activities to connect (e.g., potluck, baseball game)
- 4 Hire MD or APPs from minoritized backgrounds to work in outpatient

Faculty Life Poll Everywhere



< SOD 2023

Visual settings

Edit



When poll is active respond at PollEv.com/pittdgimdgim439 Send [pittdgimdgim439](https://t.me/pittdgimdgim439) and your message to [37607](https://t.me/37607)



What's the first word that comes to mind when you think Proud To Be GIM?

cameraderie
collaboration
reed
patient
van
successful
welcoming
deusen
cohesion
amazing
teamwork
leadership
family
community
growth
centered
impact
opportunities

Philanthropy

Wilson Scholars in Addiction Medicine Research Award

- Designed to advance diversity, equity, & inclusion in the field of addiction medicine
- Provides a mentored research experience & financial support to medical student between their 1st & 2nd years
- Program is remote with travel to Pittsburgh
- Applications due January 31, 2024



Faculty Life:

Philanthropy



Birmingham Clinic

Gleitsman Scholars Program

- URIM med students summer scholarly project, with a Pitt research mentor, career development mentor
- Travel to Pittsburgh to shadow on pall care clinical service
- As of 2023, 21 students (from all over the country) have participated in the program



Faculty Life:

2023 Faculty Development Strategic Goals

B

Faculty eligible for promotion submit paperwork

A

Nominate faculty for regional/national awards

C

Division-wide faculty development training program

B

Increase number of people applying for faculty development funds from division

Faculty Life:

2023

Administration

Strategic

Goals

B

Full complement of administrative hired & functional

B

Making compensation models transparent, predictable, & accurate

B

Raise \$300,000 external philanthropy

A

Present division finances overview quarterly

D

Create DGIM newsletter

A

Continuation of Quarterly Faculty Meetings

2024 Faculty Development Strategic Goals

- 1 Faculty eligible for promotion submit paperwork
- 2 Nominate faculty for regional/national awards
- 3 Faculty continue to apply for faculty development funds
- 4 Faculty take part in leadership development offerings – UPMC, Pitt, AAMC, ELAM, SGIM LEAD, SGIM TEACH
- 5 Educational & experiential learning on creating psychological safety

2024 Administration Strategic Goals

- 1 Full complement of administrative hired & functional
- 2 Implement primary care compensation plan that is transparent & reflects access & panel management
- 3 Continuation of Quarterly Faculty Meetings
- 4 Present Division finances at Quarterly Meetings

The Robert Arnold Excellence in Teaching & Mentoring Award



Dem onstrates excellence in teaching activities



Dem onstrates excellence in scholarship



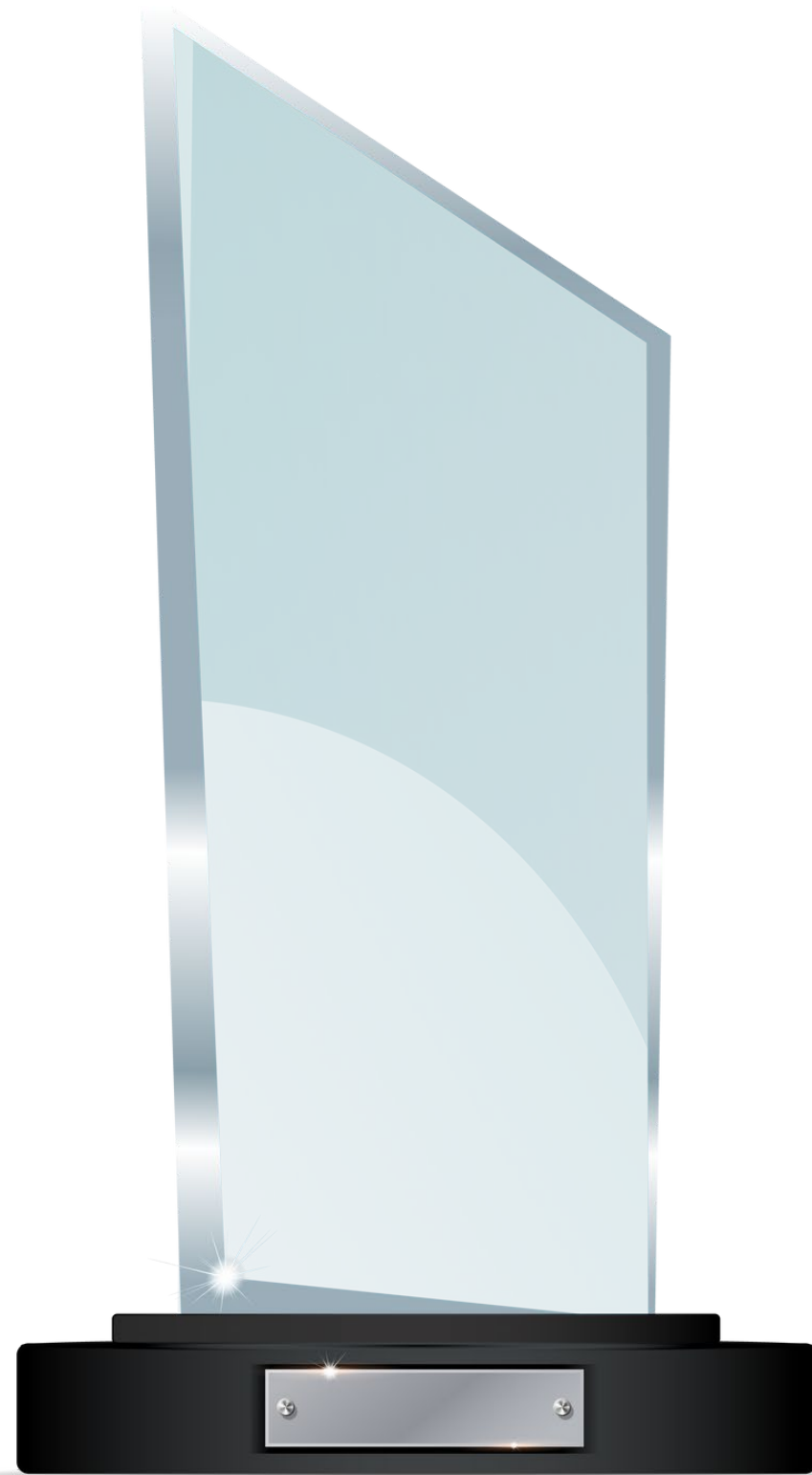
Dem onstrates excellence in mentorship & professional development of trainees & early faculty



2023 Robert Arnold
Excellence in Teaching
& Mentoring Awardee
Rene Claxton



The DGIM MVP Award



Has gone above and beyond
with service to the division



Has had success in multiple spheres,
including leadership scholarship



A role model for other faculty



2023 DGIN MVP
Payel Roy





**WE WANT
YOUR FEEDBACK**

Let us know if we
missed something
or you want to
suggest something
for next year's SOD!

2022 Group Pictures



University of Pittsburgh
Division of General Internal Medicine

Thank You

For Your Attention

